



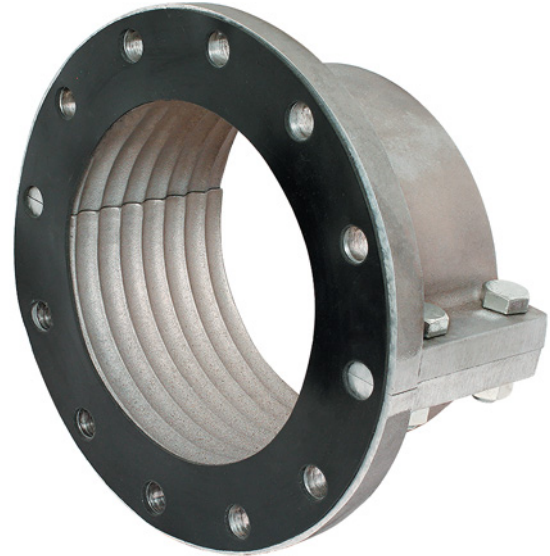
// ONE BRAND // ONE SOURCE // ONE SYSTEM

WEAR RESISTANT CUT END HOSE (RTT-CEH)

Designed for Superior Performance in Industrial and Mining Applications

CUT END HOSES – (RTT-CEH)

- Working pressure up to 150 PSI
- Custom lengths available on request
- Aluminum reusable couplings with a 150# bolt pattern flange & face gasket



CUT END HOSE DATA

Item Number	Cut End Hose Size (in)	REMA Gold Tube Thickness (in)	Std Hose Length (ft)	Working Pressure (PSI)	Min. Hose Bend Radius (in)	Tangent Needed Per End For Coupling (in)	Nominal Hose O.D. (in)	Weight Per Ft (lbs)
151022050	2	0.25	50	150	14	3.38	3.00	2.25
151032050	3	0.25	50	150	21	3.38	4.50	4.00
151043050	4	0.38	50	150	28	3.38	5.25	6.00
151063050	6	0.38	50	150	42	4.50	7.50	9.40
151083025	8	0.38	25	150	70	6.00	9.50	13.50
151103025	10	0.38	25	150	80	7.00	11.50	20.30
151123025	12	0.38	25	150	100	7.75	13.75	24.00
151143025	14	0.38	25	150	120	7.75	16.00	28.75

REMA TIP TOP/North America, Inc.

1500 Industrial Blvd. • Madison, GA 30650 • Toll Free 800.334.REMA (7362) • Phone 706.752.4000 • Fax 706.752.4015 → www.rematiptop.com