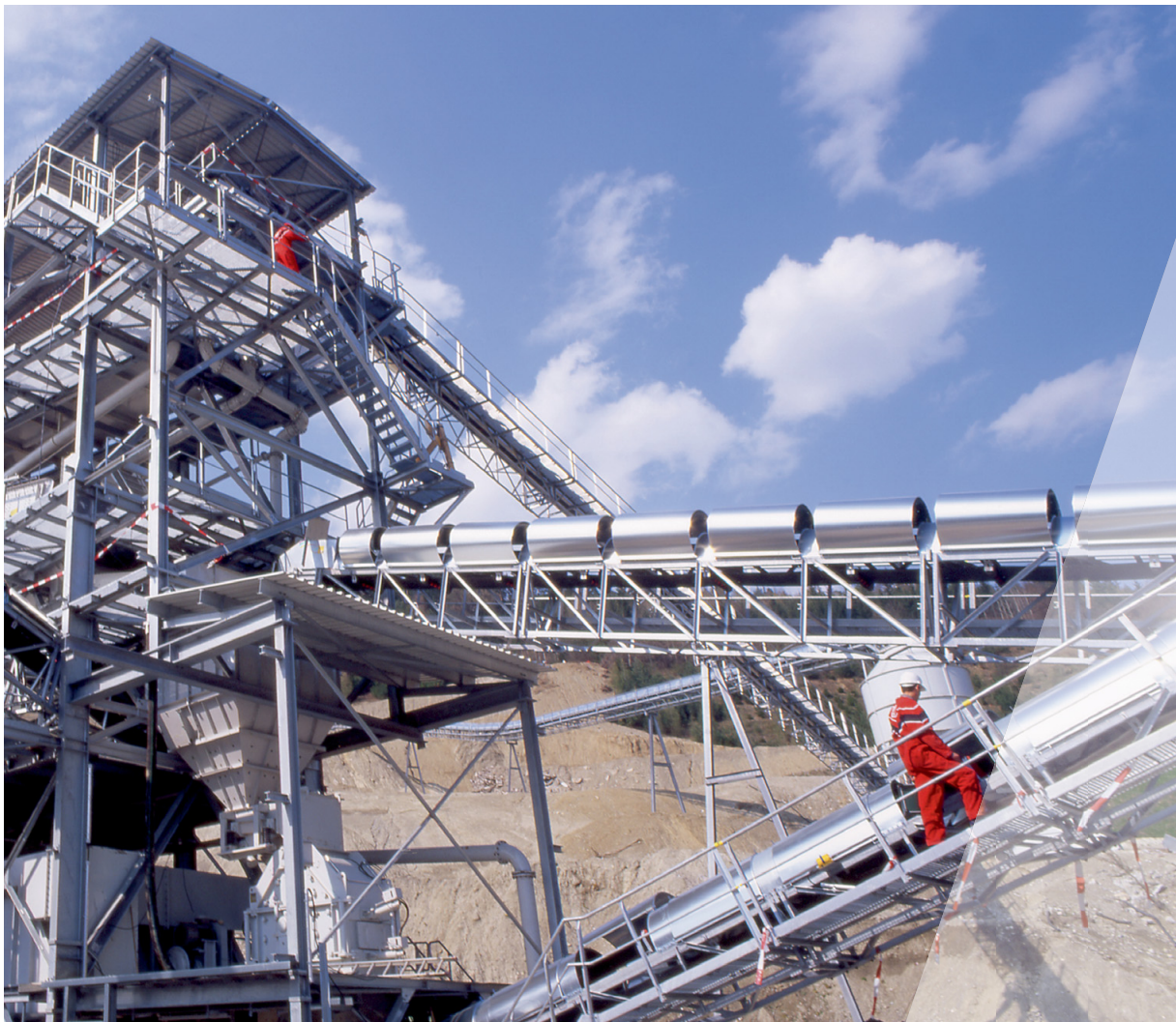




// ONE BRAND // ONE SOURCE // ONE SYSTEM



REMACLEAN
Belt Cleaning Systems



Increase your productivity – with REMACLEAN Conveyor Belt Cleaning Systems from REMA TIP TOP!

The cleaning of conveyor belts is a subject that is often neglected by many plant operators. Optimal cleaning, however, contributes to the economic operation of the plant, because interruptions to the production process caused by contamination can lead to inefficiency and even cause the entire conveying system to come to a halt. In addition, inadequate cleaning of the belt brings additional cost, for example through increased wear on pulleys or the belt, loss of bulk material and expenses for manual cleaning-up work.

Reduced production times and additional maintenance costs that can be avoided are no longer acceptable to operators.

The demands placed on the manufacturers of conveyor belt cleaning systems are therefore clearly formulated:

- Optimum cleaning results while at the same time protecting the belt
- Efficient installation and servicing
- A long service life of the belt cleaning system

Conveyor belt cleaning is a complex matter. Several factors must be simultaneously taken into account in order to achieve good and economical cleaning results:

- Selection of a suitable belt cleaning system for the particular application
- Combination of the right systems (pre- and fine cleaning)
- Optimum position of the belt cleaners in the conveyor system
- Installation by trained technicians
- Determination and execution of regular servicing activities by trained technicians

If any one of these points is not taken into account even the best system will fail after a short time and therefore will not contribute to economic operation.

SCRAPER RUBBER

REMACLEAN 60 and 70

Due to its excellent abrasion-resistance and high elasticity, our special rubber materials REMACLEAN 60 and REMACLEAN 70 are perfectly suitable and achieve significantly longer service life compared to conventional rubber materials. The scraper rubber is mounted on the system's existing scraper system and when new may protrude from the bracket by up to its own thickness.

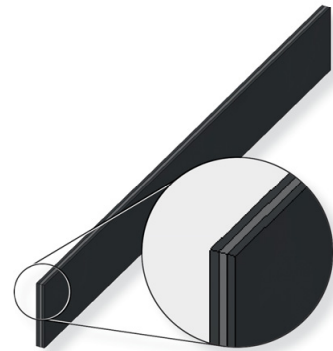


Product	REMACLEAN 60	REMACLEAN 70	REMACLEAN 70 V*
Hardness [± 5 Shore A]	60	62	60
Abrasion [mm³]	90	55	180
Available dimensions [Roll length 10 m]	Thickness: 5/7/8/10/15/20/30 mm Width: 100/120/150/200/250/2000 mm	Thickness: 5/7/10/15/20/30 mm Width: 100/120/150/200/2000 mm	Thickness: 8/10/15/20/30 mm Width: 100/120/150/200/2000 mm

* German underground approval: LOBA No. 18.43.21-91-4 Polish underground approval: Dopuszczenie WUG Katowice No. B/1724/2007 May be used in ATEX installations.

REMACLEAN CAB

REMACLEAN CAB consists of three layers with different Shore hardnesses: two hard outer layers surround a soft core. This combination allows intensive and yet protective conveyor belt cleaning. At the same pressure against the conveyor belt, the cleaning effect of REMACLEAN CAB is approximately 20 % better than standard qualities. Service life is often several times longer than that of conventional scraper rubber materials. REMACLEAN CAB is mounted on the existing scraping system of the equipment and when new can protrude from the bracket by more than one and a half times its own thickness.



Product	REMACLEAN CAB green	REMACLEAN CAB gray	REMACLEAN CAB V*
Hardness [± 5 Shore A]	70 / 48 / 70	85 / 50 / 85	73 / 60 / 73
Abrasion [mm³]	90 / 190 / 90	140 / 130 / 140	120 / 130 / 120
Available dimensions [Roll length 10 m]	Thickness: 15/20/25/30/40/50 mm Width: 100/120/150/200/250/2000 mm	Thickness: 15/20/25/30/40/50 mm Width: 100/120/150/200/250/2000 mm	Thickness: 15/20/25/30/40/50 mm Width: 100/120/150/200/250/2000 mm

* German underground approval: LOBA No. 18.43.21-91-4/18.43.21-30-33
Polish underground approval: Dopuszczenie WUG Katowice No. B/1724/2007
May be used in ATEX installations.

SCRAPER BARS

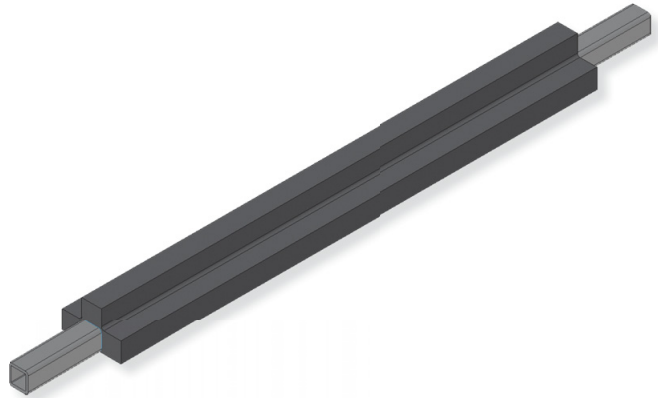
REMA TIP TOP offers a wide range of scraper bars for cleaning of conveyor belt top covers on the return side of the conveyor. Scraper bars made of rubber, polyurethane, rubber-ceramic and rubber-metal are available.

REMACLEAN KWA

Benefits and features:

- Three scraper bars which can be used one after the other
- Belt-friendly scraper with good cleaning efficiency
- Long service life due to highly abrasion resistant rubber material
- Cost-effective due to excellent price-performance ratio
- Installation is recommended with REMA TIP TOP tension units INNOVATION, PRECISION or STANDARD
- For belt speeds up to 3.5 m/s

Product	REMACLEAN KWA	REMACLEAN KWA V*
Hardness [± 5 Shore A]	64	62
Abrasion [mm ³]	50	130
Belt width [mm]	500-1800	500-1400
Features	Highly abrasion resistant	Self-extinguishing, anti-static and moderate oil resistant

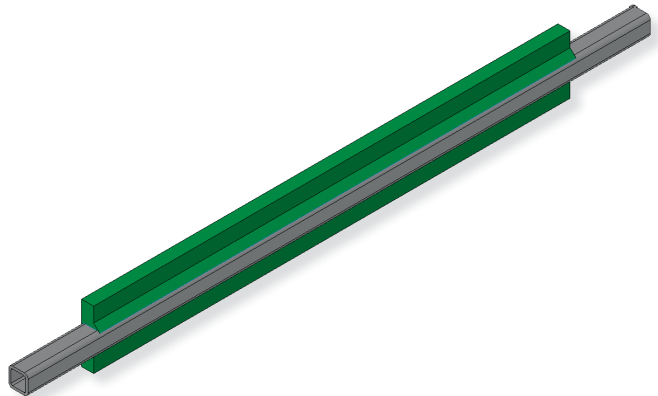


*German underground approval: LOBA No. 18.43.21-91-24
Polish underground approval: Dopuszczenie WUG Katowice No. B/1724/2007

REMACLEAN PUR

Benefits and features

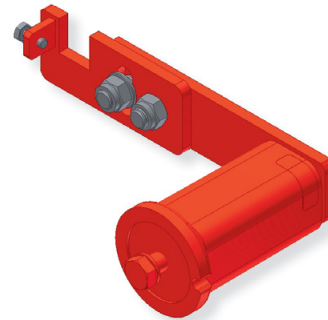
- Two scraper bars which can be used one after the other
- Long service life of REMATHAN polyurethane (90 ± 5 Shore A)
- Oil and grease resistant
- For belt widths 500 - 1600 mm
- Installation is recommended with REMA TIP TOP tension units INNOVATION, PRECISION or STANDARD
- Suitable for use with mechanical fasteners
- Suitable for shuttle belt operation in combination with tension unit INNOVATION
- For belt speeds up to 3.5 m/s



TENSION UNITS

STANDARD

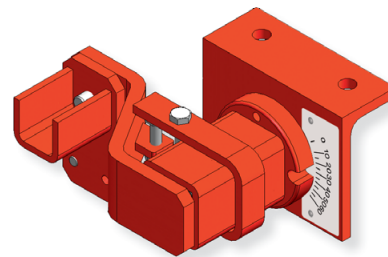
- Extremely long service life
- Vibration absorbing and flexible due to integrated rubber spring elements
- Quick and easy replacement of scraper systems
- Consistent cleaning performance due to constant contact pressure
- Can be retrofitted to all belt conveyors with minimum effort
- Low overall height
- Maintenance-free; minimum time required for inspection and servicing
- For belt widths 400 - 1600 mm
- STANDARD INOX for belt widths of 400 - 900 mm (stainless steel version)



PRECISION

Same features as STANDARD and additional:

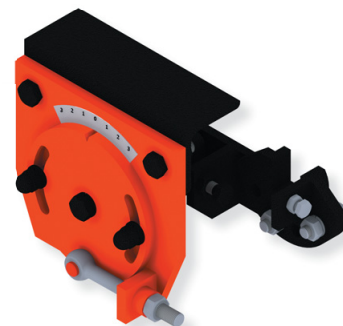
- Protection against damage to the conveyor belt if the scraper is worn out
- Adjustable pitch of scraper blade
- Pivoting mechanism for precise 90° adjustment of scraper to belt
- Scale for setting the contact pressure
- For belt widths 400 - 1800 mm



INNOVATION

Same features as PRECISION and additional:

- Contact pressure continuously adjustable by tension spindle
- Pressure adjustment by one person
- Precise micro adjustment of contact pressure
- Can be adjusted without heavy tools
- Suitable for shuttle belt operation in combination with REMACLEAN PUR and HML scrapers
- Pivoting mechanism for precise 90° adjustment of scraper to belt
- Universal installation possibilities
- Display for adjustment of contact pressure
- For belt widths 400 - 1800 mm



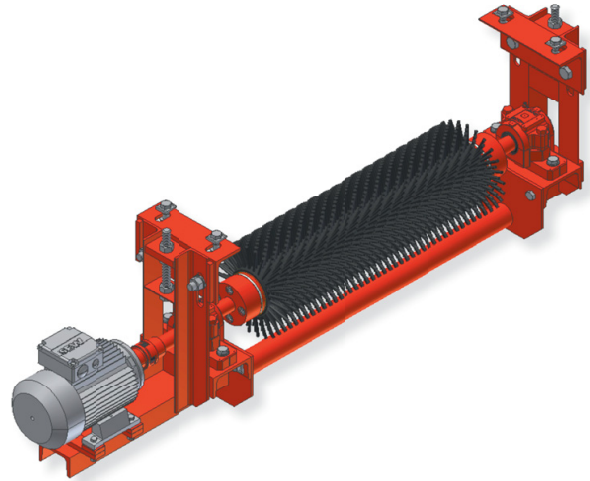
BELT CLEANING BRUSHES

There are applications where static belt cleaning systems do not deliver satisfying cleaning results. Our belt cleaning brushes are the ideal solution for these special applications.

REMACLEAN GRB

REMACLEAN GRB is a belt cleaning system with electrically driven rubber brush for the cleaning of sticky and powdery materials from conveyor belt top covers.

- Belt cleaning brush with direct drive from electric motor
- Ideal for cleaning of fine, powdery and also sticky materials
- Ideal in combination with a primary belt cleaning system (especially when having wet materials)
- High flexibility of the rubber bristles ensure belt friendly cleaning
- Self cleaning
- Available for ATEX applications
- Available for food applications as well as oil resistant version
- For belt speeds up to 2.5 m/s



REMACLEAN TMB

REMACLEAN TMB is an electrically driven conveyor belt cleaning system with a plastic brush designed for the cleaning of belts that convey dry material at operating temperatures up to 80° C.

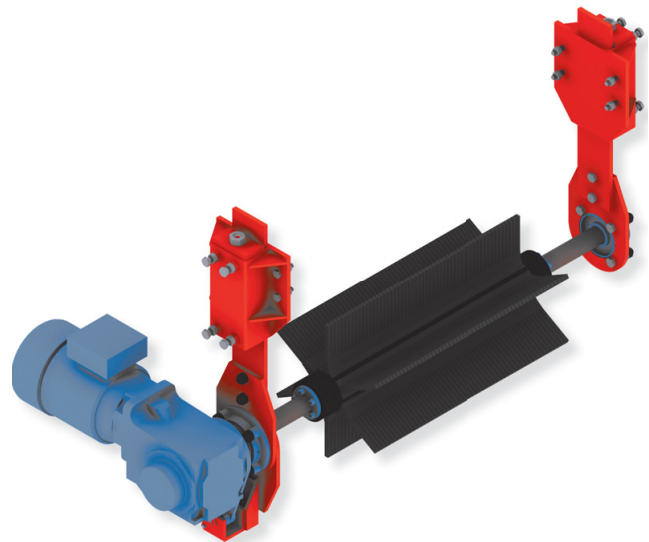
- Belt friendly cleaning
- Cleaning of dry and wettish materials
- Easy and quick adjustment with the spindle system
- Availability of various brush types for different requirements
- Compact design due to drum motor
- Pivot mechanism for optimum positioning
- For belt speeds up to 6.5 m/s



REMACLEAN SGB

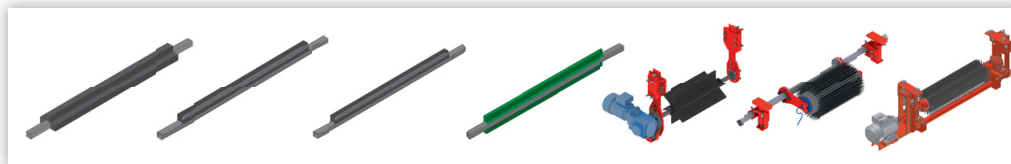
REMACLEAN SGB is a belt cleaning system with electrically driven rubber brush for cleaning of the top cover of incline conveyors, especially chevron belts.

- Unique cleaning of incline conveyor belts with cleats up to 24 mm
- Rotation in opposite direction to belt
- Long service life by using high quality rubber compounds (REMALINE 70)
- Motors for ATEX applications available on request
- For belt speeds up to 2.5 m/s



OVERVIEW: SCRAPER BARS, BELT CLEANING BRUSHES

REMACLEAN – belt cleaning systems for use on belt



Type	KWA	M	C	PUR	SGB	TMB	GRB
Belt width (mm)	500-1800	500-1600	500-1600	500-1600	400-1400	400-1400	400-2000
Type of cleaning system	V, H	V, H	V, H	V, H	H	F	F
For belt speeds up to (m/s)	3.5	3.5	3.5	3.5	2.5	6.5	2.5
Suited for reverse operation	no	yes	yes	yes	yes*	yes	yes
Blade type	D	D	D	D	-	-	-
Blade material	Rubber	Rubbermetal	Rubberceramic	PUR	-	-	-
Brush material	-	-	-	-	Rubber	Plastic	Rubber
Max. operating temperature (°C)	70	70	70	70	70	80	70
ATEX version available	yes	no	no	yes	no	no	yes
Suitable for mechanical fasteners	yes	no	no	yes	yes	no	no
Available for food industry	yes	no	no	no	no	yes	yes
Suitable for oily and greasy materials	1	3	3	2	2	3	2
Sand/gravel (dry)	3	2	3	3	1	2	1
Sand/gravel (wet)	2	2	3	2	1	3	1
Coal (raw)	2	2	2	2	1	3	1
Lignite/tailling	3	2	2	2	1	3	2
Ore	3	2	3	2	1	3	2
Sinter	3	2	3	3	2	3	3
Clay	2	2	2	2	2-3	-	-
Cement	2	2	2	1	1	2	1
Gypsum	3	2	2	2	3	-	-
Waste	2	1	1	1	1	2-3	2

1 = recommendable, 2 = limited suitability, 3 = not recommendable

V = Precleaner, H = Main cleaner, G = Basic cleaning, F = Fine cleaning, S = Segments, D = Seamless blade, PUR = Polyurethane, HM = Tungsten carbide,

* with rotation speed switchover

EX motors are available upon request.

The recommendations listed as examples of the use of the products are based on experience gained in technical applications but are not an assurance of their suitability for specific application areas. These recommendations do not obviate the need for the user to check this. In individual cases, we recommend that technical application advice is taken – experienced REMA TIP TOP specialists are available for this purpose.



QUESTIONNAIRE: REMACLEAN Belt Cleaning System

Company _____

Information about conveyor equipment:

Belt designation: _____ Type/make: _____ Strenght (mm): _____

Belt width (mm): _____ Distance between pulleys (m): _____ Belt speed (m/s): _____

Belt surface: ☐ new ☐ used/smooth ☐ damaged ☐ heavily damaged

Shuttle belt conveyor: ☐ yes ☐ no

Belt splice: ☐ cold vulk. ☐ hot vulk. ☐ mechanical

Operating time: _____ hours per day _____ days per week

Temperature at the site where the belt cleaning system is to be used: _____ °C

Pulley diameter _____ mm

Pulley shape:: ☐ cylindric ☐ crowned lagging thicknesses (mm): _____

Pulley lagging condition: ☐ new ☐ evenly used ☐ damaged ☐ heavily damaged

Remarks: _____

Material conveyed _____ Lump size (mm): _____

Moisture content _____ % Tends to dry or harden: ☐ yes ☐ no

Quartz content: ☐ yes _____ % ☐ no

Sticky admixture content: _____

Installed cleaning system:

Manufacturer: _____ Type: _____

Estimate of cleaning performance: _____

Remarks (Please enclose photos): _____

Information prepared:

Place and date

Name

Signature

New REMACLEAN cleaning system recommended:

Pre-cleaner: _____

Ref. No.: _____

Main cleaner: _____

Ref. No.: _____

Remarks: _____

Recommendation prepared:

Place and date

Name

Signature

REMA TIP TOP Product & Solutions

CONVEYING SOLUTIONS

Pulley Lagging

- PERFORMANCE GRIP 70
- REMAGRIP
- REMAGRIP Ceramic Lagging
- UNIGRIP
- UNILAG
- T-REX

Belt Cleaners

- REMACLEAN - T-Bar Scrapers
- REMACLEAN - Green Combi
- REMACLEAN - Grey Combi
- REMACLEAN - Cleaning Brush

Skirting

- REMASKIRT
- Combi-Skirt
- T-REX
- UNISKIRT

Repair Products

- Repair Patches
- Repair Strips
- REMA GOO
- RG 7000
- T-2 Repair System

Other

- Conveyor Belting
- REMACLEAT
- Edge Wall
- Impact Slider Bed Bars
- REMAMILL
- REMASCREEN

Rollers & Pulleys

- REMASLEEVE
- REMAROLL
- REMATRACK

WEAR & CORROSION PROTECTION

Wear Protection Lining

- REMA Performance Line
- REMALINE
- REMASTAR
- UNILINE
- REMATHAN
- T-REX

Rubber Linings

- CHEMOLINE
- CHEMONIT

Heavy Wear Protection

- REMALOX
- REMALOX HD
- KG Bars
- ZP Profile Bars
- REMA WEAR Repair

Anticaking

- REMAFLOX
- REMALEN
- REMASLIDE

Corrosion Coatings & Linings

- COROFLAKE
- COROGARD
- COROFLOOR
- TOPLINE
- RCC LININGS
- COROFLEX

Material Handling Hose

- Fixed Flange
- Split or Swivel Flange
- Cut End Hose

ADHESIVES & SOLUTIONS

Cements & Adhesives

- SC 2000 Black / White
- SC 4000 Black / White
- BC 3004 Blue Cement
- PC-4 Plastic Cement

Solutions

- PR 200 Metal Primer
- #13 Cleaning Solvent
- R50 Cleaning Solvent
- TIP TOP Hand Cleaner
- A&B Vulc Compound

Splice Kits

- Hot Splice Kits
- MSHA Splice Kits
- WK Press and Splice Material
- Filler Rubber
- CN Bonding Rubber

TOOLS & REPAIR

Tools

- Rubber Cut Saw
- Extruder Gun
- Vulcanizing Presses
- Combi Stripper
- Grooving Tool

Other

- REMAWRAP Pipe Repair
- OTR Tire Patches



// ONE BRAND // ONE SOURCE // ONE SYSTEM

REMA TIP TOP/North America, Inc.
1500 Industrial Blvd.
Madison, GA 30650
Phone: 800.334.REMA (7362)
706.752.4000
Fax: 706.752.4015
www.rematiptop.com