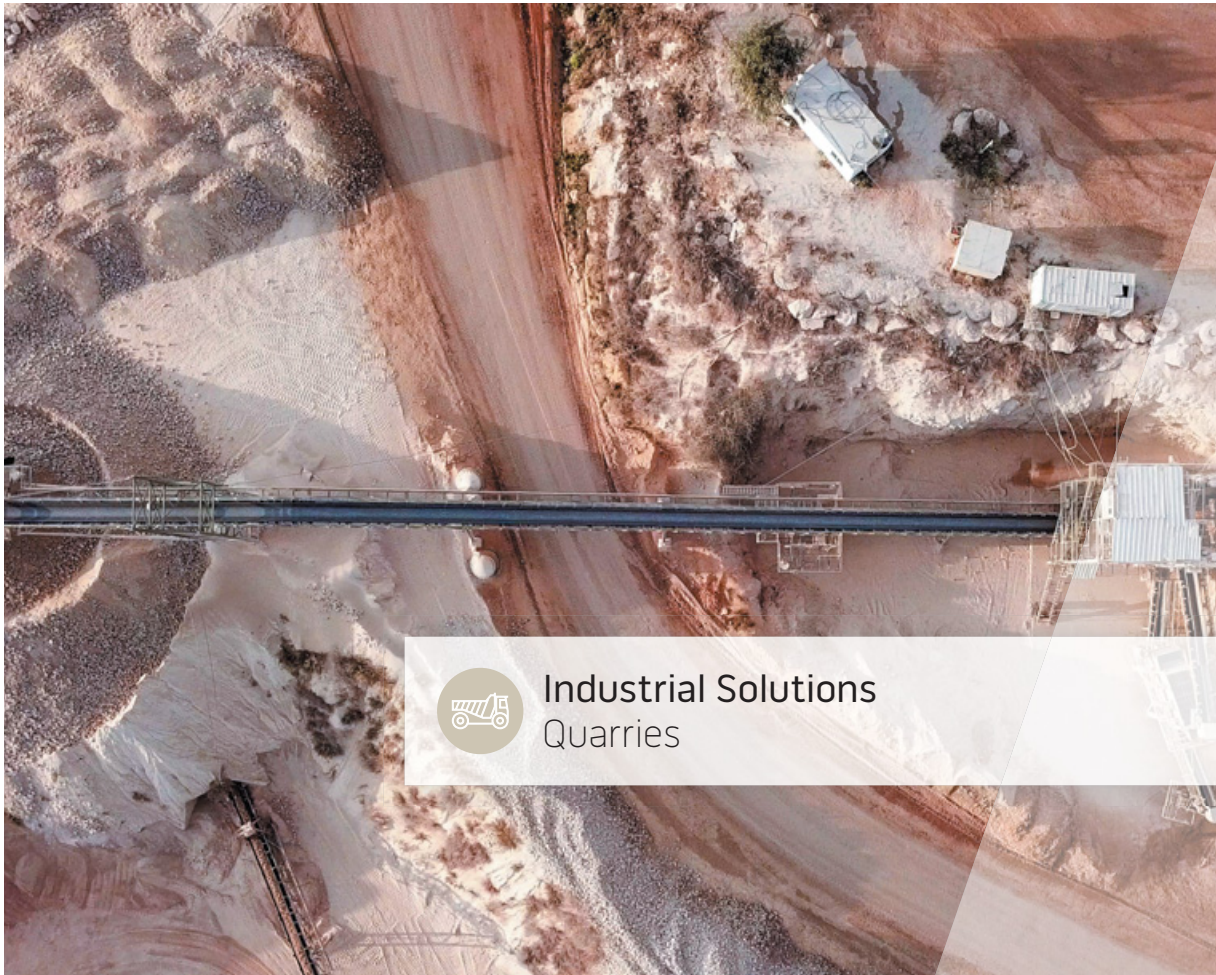




// ONE BRAND // ONE SOURCE // ONE SYSTEM



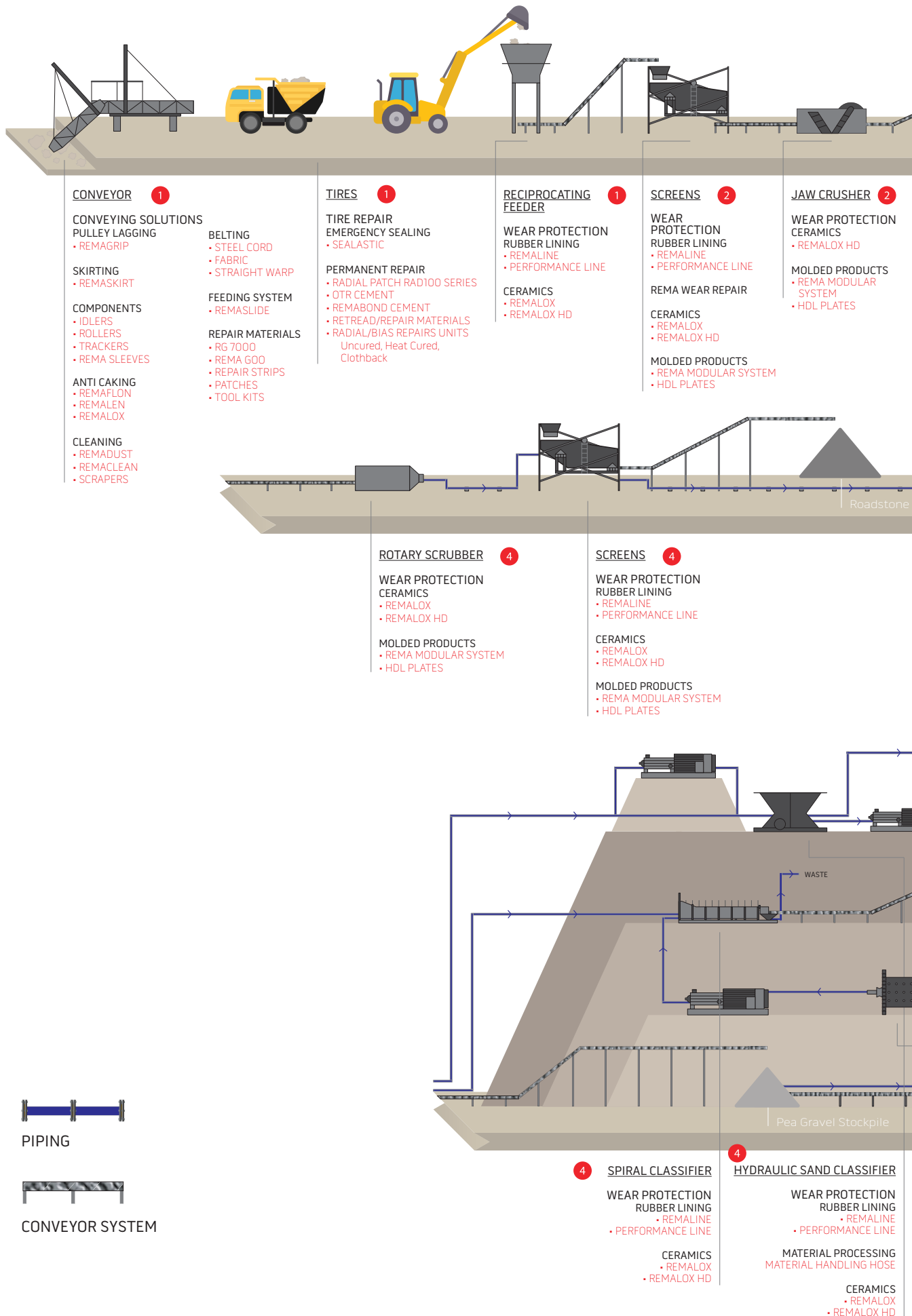
Industrial Solutions
Quarries



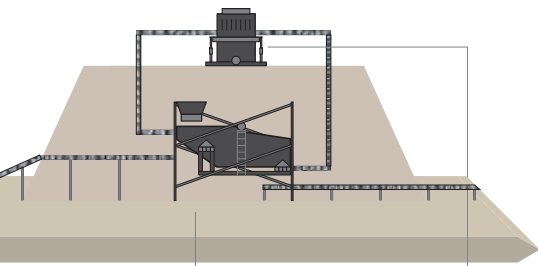
SAND & GRAVEL

From the ground to the surface

Every industry is different, as is every plant. The processing of raw materials, minerals and ores requires plant machinery and equipment to be operating efficiently at all times. REMA TIP TOP Industrial Solutions gives sand & gravel plant operators a complete range of conveyor belting and components, wear protection and surface protection solutions tailored to the specific needs of your plant.



Sand & Gravel Process



EXCAVATION 1
PRODUCTS & SOLUTIONS

VIBRATING SCREEN 2

**WEAR PROTECTION
RUBBER LINING**
• REMALINE
• PERFORMANCE LINE

SECONDARY CRUSHER 2

**WEAR PROTECTION
CERAMICS**
• REMALOX
• REMALOX HD

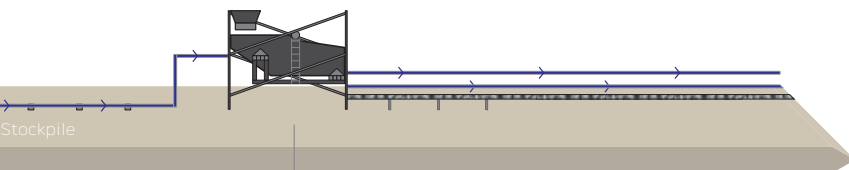
MOLDED PRODUCTS
• REMA MODULAR SYSTEM
• HDL PLATES

CRUSHING 2
PRODUCTS & SOLUTIONS

TRANSPORT 3
PRODUCTS & SOLUTIONS

CLASSIFICATION 4
PRODUCTS & SOLUTIONS

STORAGE & LOADING 5
PRODUCTS & SOLUTIONS

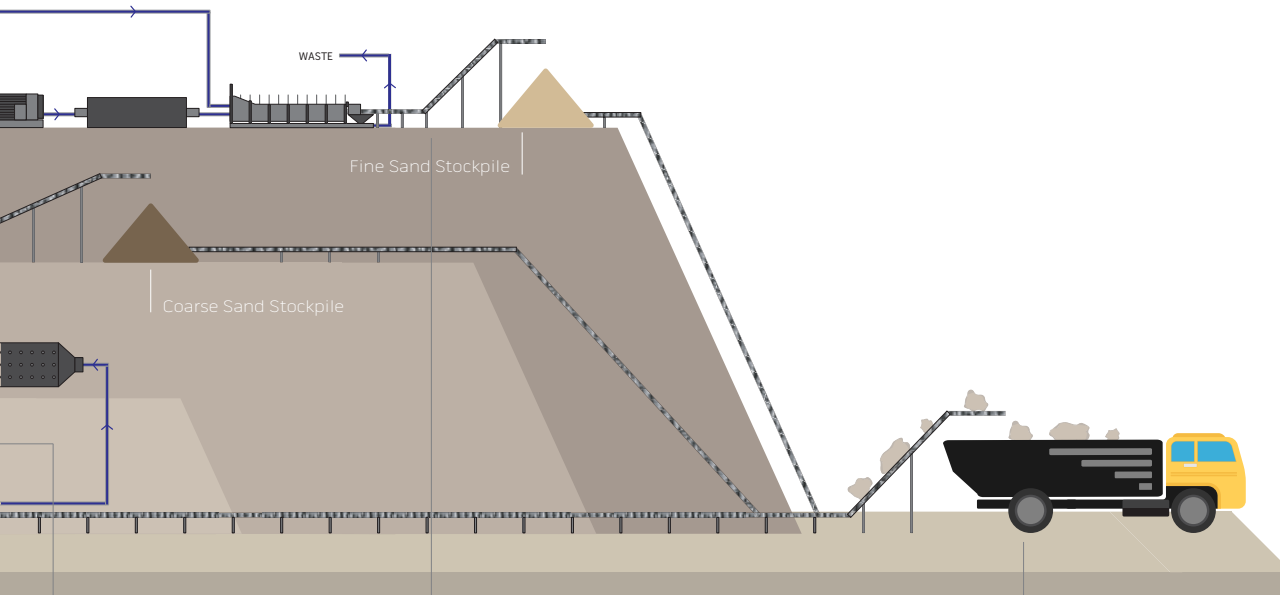


SCREENS 4

**WEAR PROTECTION
RUBBER LINING**
• REMALINE
• PERFORMANCE LINE

CERAMICS
• REMALOX
• REMALOX HD

MOLDED PRODUCTS
• REMA MODULAR SYSTEM
• HDL PLATES



ROD MILL 4

**WEAR PROTECTION
CERAMICS**
• REMALOX
• REMALOX HD

MOLDED PRODUCTS
• REMA MODULAR SYSTEM
• HDL PLATES

REMAMILL SYSTEM
• RUBBER LINING
• LIFTER BARS
• PROFILES
• DISCHARGE PLATES

SPIRAL CLASSIFIER 4

**WEAR PROTECTION
RUBBER LINING**
• REMALINE
• PERFORMANCE LINE

CERAMICS
• REMALOX
• REMALOX HD

TRANSPORT 5

**WEAR PROTECTION
RUBBER LINING**
• REMALINE
• PERFORMANCE LINE
• REMA MODULAR SYSTEM
• BOOTS



Sand & Gravel



Salt



Dredging



Phosphate



Quartz

WEAR PROTECTION LINING

REMA TIP TOP manufactures a wide range of wear protection lining products to provide optimum protection for your machinery and equipment to minimize production downtime, reduce maintenance costs and increase productivity. The REMALINE products have been engineered to meet specific performance and application needs and come standard with the CN Bonding layer that when used with REMA TIP TOP adhesives, provide the greatest bond strength.



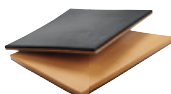
REMALINE 25 - Highly elastic and soft natural rubber compound for protection against wear and material build up. Applications of use include covers for conveyor rollers, lining elevator buckets, outlet funnels for dry mortar, flexilo and bunker lining and as a noise reduction lining.



REMALINE 35 - Highly elastic natural rubber compound with excellent resistance to wet abrasion and sharp particles, resistant to material buildup with excellent self-cleaning capability. Applications of use include slurry handling such as; lining slurry chutes, pipes, pumps, hydrocyclones, flotation cells, tanks and launders. Tank, Chute and excavator bucket lining for sticky materials such as mud or clay.



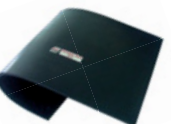
REMALINE 40 - A natural rubber compound with high tensile strength and tear growth resistance designed for wet or dry applications. Features outstanding protection for sharp particles due to its high resistance to tearing and also features excellent qualities for eliminating bridge formation and build-up. Applications of use include lining against caking, abrasion and impact, flexilo and hopper lining, lagging for non-driven pulleys with low belt tension. Also available in Orange, fabric reinforcement, Oil and Grease Resistant and white food grade.



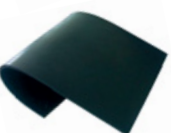
REMALINE 40 MAINTENANCE PRO - A natural rubber with high tensile strength with a wear indicator built into the sheet for easy and safe inspection, putting an end to premature, unplanned system downtime and unnecessary maintenance costs. Applications of use include areas that are hard to access and inspect, lining of drains, pipes, hydrocyclones, flotation cells, tanks and flexilo and bunker lining.



REMALINE 50 - A natural rubber that is highly tear resistant and offers excellent protection in wet and dry abrasive applications. Provides safe protection against wear and material build up especially from wet abrasion and sharp edged materials with a high tear growth and cut resistance. Applications of use include wet areas such as linings for cool water pipes in power plants, lining of chutes, tanks and discharge hoppers and lagging for non-driven pulleys with low belt traction.



REMALINE 60 - A styrene, Butadiene and Isoprene rubber with good dry wear resistance, impact and weather resistance. Applications of use include lining for vibration chutes, slides, material transfer points, truck bodies, impact curtains, bunkers, silos, chutes and filtering buckets. Can also be used for lagging on non-driven pulleys with moderate to high belt tension.



PERFORMANCE LINE 70 - A Butadiene and Natural rubber compound that provides excellent abrasion and impact resistance, is the optimum wear protection solution for extreme loads with excellent tensile strength and tear growth resistance. Applications of use include mill linings, material transfer points, chutes, bunkers, slides. Linings for truck bodies, impact curtains and vibrating conveyors. Lagging for non-driven pulleys with moderate to high belt tension. Available with fabric reinforcement, oil and grease resistance, self-extinguishing, heat resistance and white food grade.



Graphite



Gypsum



Clay



Limestone



Olivine

HEAVY WEAR PROTECTION

REMA TIP TOP heavy duty wear linings provide a longer wear life in applications with extreme abrasion. Engineered to meet specific application needs, these products solve the most intense wear and abrasion problems.



REMALOX - Highly abrasion resistant ceramic tiles molded in wear resistant rubber with CN bonding layer for easy installation to metal substrates. Ideal for lining against extreme wear through abrasion at high speeds, ideal for low to medium impact applications. Can also be used for anti-caking in abrasive applications. Applications of use include pipelines, vibratory feeders, cyclones, skips, bunkers, chutes, loading points, slides, hoppers and silos.

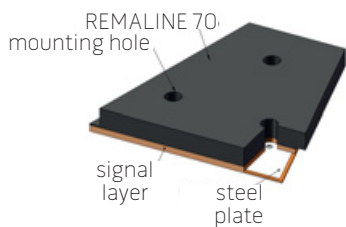


REMALOX HD 35 - Highly abrasion resistant ceramic tiles hot vulcanized in rubber on a 5 mm metal back for easy installation. Ideal for lining against extreme wear through impact and abrasion at high speeds, lining of material transfer stations with low impact angles. Ceramic and rubber design provide for absorption of impact energies in medium and heavy duty applications. Applications of use include pipelines, vibratory feeders, cyclones, skips, bunkers, chutes, loading points, slides, hoppers and silos.

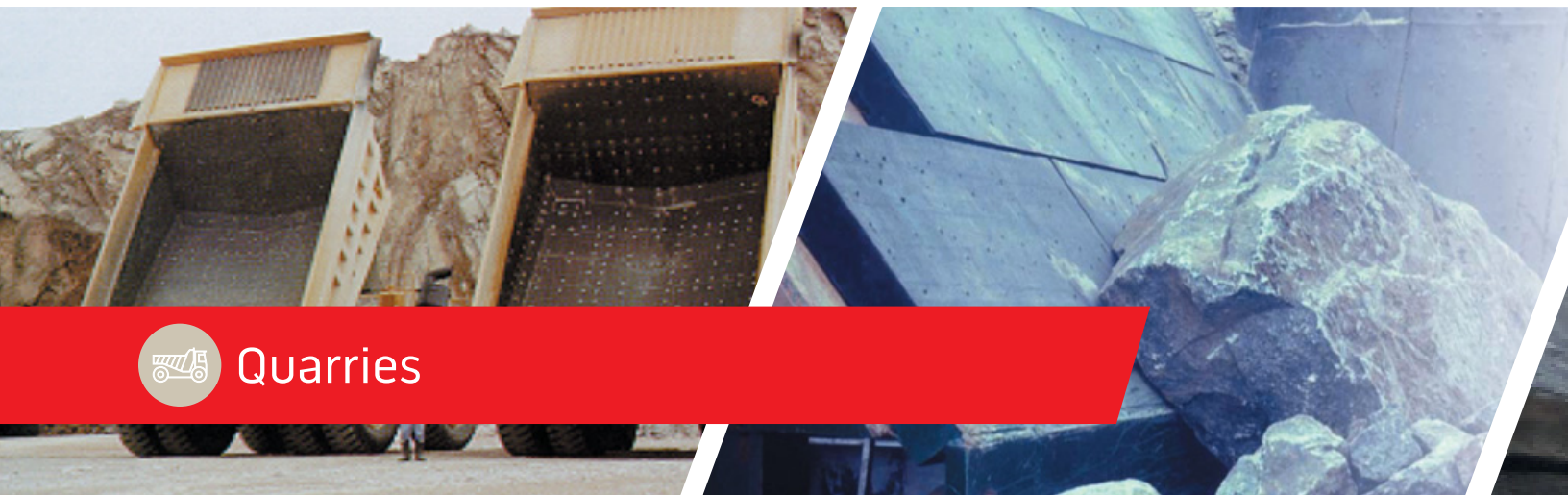


HDL Plates - Highly wear resistant PERFORMANCE LINE 70 hot vulcanized to a 5 mm metal backing. Provides protection against abrasion and impact energies with large size bulk material. Easy, flexible and fast installation and replacement. Good resistance to weather while reducing noise and vibration. Ideal for medium to heavy duty applications with abrasion and impact. Applications of use include truck beds, bunkers, chutes, loading points, slides, hoppers, and silos.

ZP Plates - Profile plates with PERFORMANCE LINE 70 quality rubber with excellent resistance against wear in dry condition and impact energy. The profile corrects an unfavorable impact angle (for rubber ideal angle of impact is 10-50 degrees). Applications of use include material transfer points with problematic impact angles, impact aprons and elastic impact curtains.



REMA Modular System (RMS) - Engineered in a trapezoidal shape to ensure that material always travels across the seams to reduce wear and leaching at the seam, with an overlapping connection. Highly wear resistance PERFORMANCE LINE 70 rubber over an orange REMALINE 40 signal layer provides protection against impact caused by dry, sharp edged material. Simple, flexible and quick installation with secure attachment allows for easy replacement. Reduces noise pollution and dampens vibration. Ideal for medium to heavy duty applications with impact and abrasion wear. Applications of use include truck beds, primary bunkers, hoppers, chutes, loading points, feeders, funnels, silos and areas subject to high wear and noise. Also available with REMATHAN and REMALOX HD for applications needing special wear, abrasion and anti-caking needs.



Quarries



Sand & Gravel



Salt



Dredging



Phosphate



Quartz

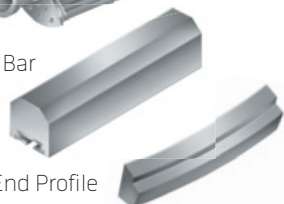
REMAMILL

MILL LININGS

REMAMILL
Mill Lining



Lifter Bar



End Profile

Individual design of the lining, adapted to each application improves mill efficiency and output, significantly cutting energy costs. Highly wear resistant elastomer materials prolong service life and reduce noise considerably.

RUBBER LINING - Shell and head plates of REMAMILL 70 or REMAMILL 70 HR rubber are highly abrasion resistant. Fixed in place by lifter bars over the fastening lips.

LIFTER BARS - Transport the grinding media and material to be milled, beveled for optimal performance.

PROFILES - Transition between the shell and head lining.

DISCHARGE PLATES - Transport milled material, steel construction with high quality vulcanized rubber for wear protection.

TIRE REPAIR

TIRES



SEALASTIC - Emergency repair kit with cement, insertion tool and repair units.

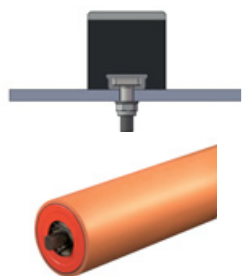
REMABOND - For mold-cure and pre-cure retreading and repair available for brush and spray applied. Has a high green tack, excellent bonding strength and is formulated for heat and pressure type cures.

OTR CEMENT - Specifically designed for the chemical application of REMA TIP TOP radial and bias ply repair units, optimizing the service performance of long haul earthmover and agricultural tires.

REPAIR UNITS - Repair units available in uncured, heat cure and clothback in Basket Radial, Center Tread Radial, ALR Radial, Bias, Basket Bias, ALB Skidder Bias and Sub Tread Bias.

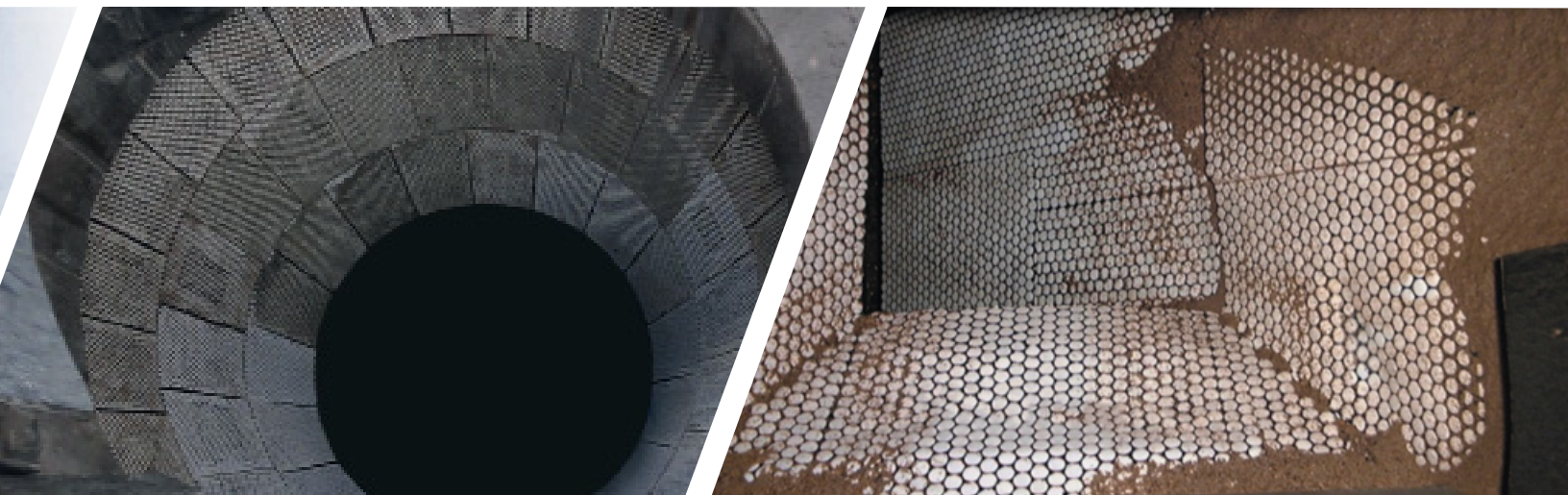
COMPONENTS

CONVEYING SOLUTIONS



REMASLIDE - Impact bars absorb the drop energy of material impact through their proven rubber substrate with UHMW top surface for reduced drag with a lower coefficient of friction. By fully supporting the conveyor belt across the feed points and transfer stations, damage of the belt can be avoided. Also available with polyurethane and ceramic top surfaces.

REMASLEEVE - A natural and Styrene Butadiene rubber compound idler sleeve that reduces slippage, noise and provides protection from material or ice build-up on idlers while protecting against abrasion, wear, impact and corrosion.



Graphite



Gypsum



Clay

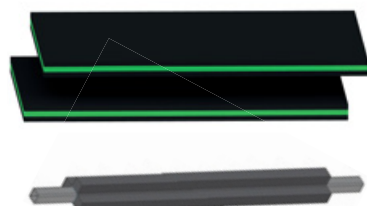


Limestone



Olivine

CLEANING

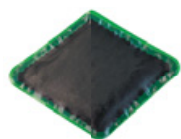


REMALINE 25 Dust Sealing Rubber - highly elastic and weather resistant natural rubber with fabric texture on both sides.

REMACLEAN - Scraper rubber, cleaning brushes and the KWA T-Bar scraper provide high performance belt cleaning with fast and easy installation. Multiple cleaning options ensure the right solution for each application.

CONVEYING SOLUTIONS

CONVEYOR BELT REPAIR MATERIAL



Diamond Repair Patch



Repair Strips

REMA TIP TOP repair materials provide solutions for a wide variety of damage to conveyor belts from cover wear to perforations and ply damage.

Round Repair Patches - available with or without fabric reinforcement

Diamond Repair Patches - available with or without fabric reinforcement

Repair Strips - available with or without fabric reinforcement

REMA GOO - Flexible Conveyor Belt Repair Material

RG 7000 - For the Quick Cover Repair of Damage to Conveyor Belting

T2 Repair System - Quick repair system for rubber-only injuries to conveyor belts and damage to rubber components.



RG7K-1 Belt Repair Kit



REMA GOO Kit



T2 System



Belt Repair Kit CR-1



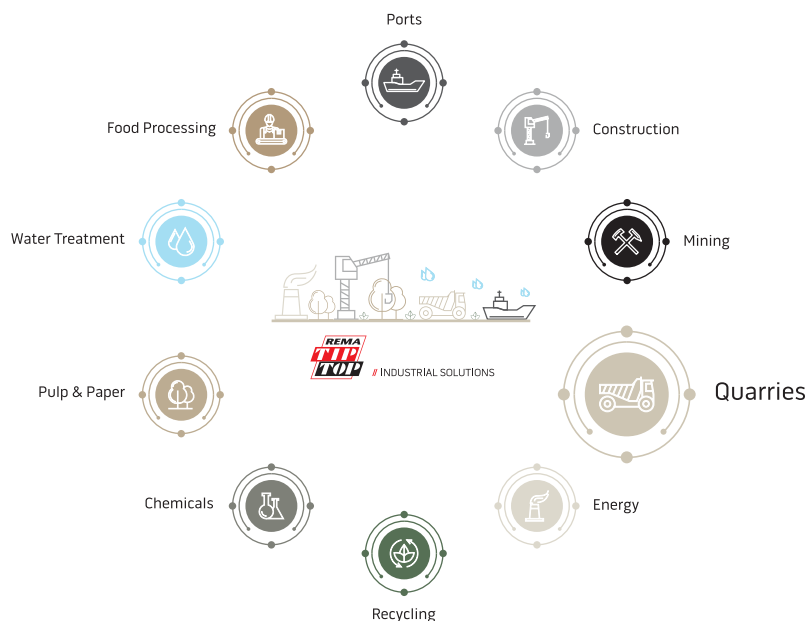
Belt Repair Kit DC-1

Driving your Performance

OUR SERVICE PROMISE

The REMA TIP TOP group of products are specifically designed with your plant and assets in mind. From wear and surface protection to conveyor technology and components, our products paired with our service solutions dramatically increase the lifecycle of your assets, lower your maintenance costs and improve the availability of your system.

For decades we have been working on-site with our customers and partners in the development of industry best practice installation, maintenance, and upkeep strategies to optimize your site beyond the benchmarks of your competitors. From developing methodologies and undertaking engineering audits, to implementing data collection technologies and tapping into The Internet of Things, we have the know-how and experience to keep you up and running longer, safer, and more efficiently.



// ONE BRAND // ONE SOURCE // ONE SYSTEM

REMA TIP TOP/North America, Inc.
1500 Industrial Blvd.
Madison, GA 30650
Phone: 800.334.REMA (7362)
706.752.4000
Fax: 706.752.4015
www.rematiptop.com