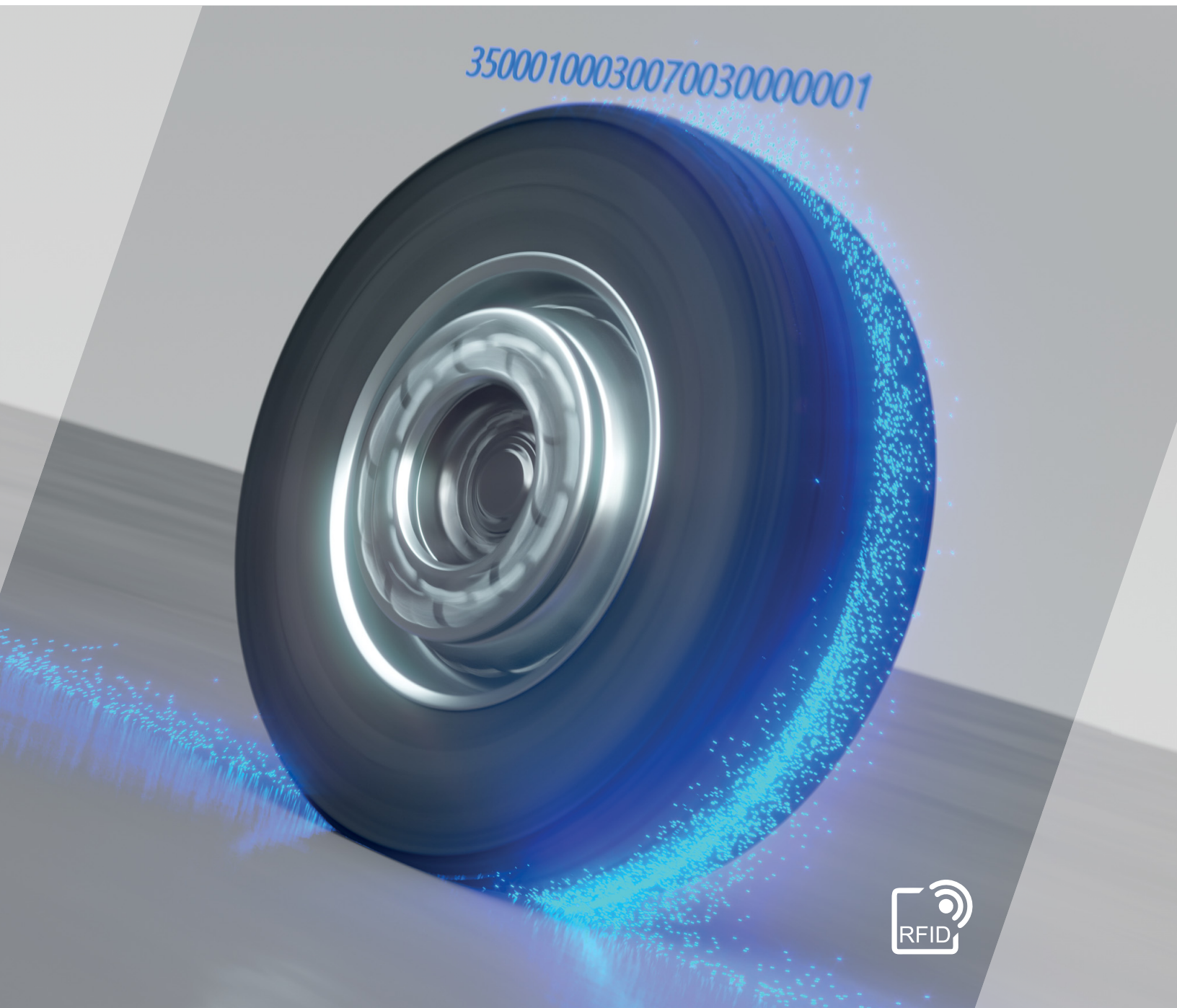


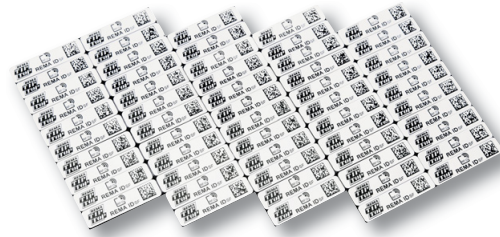


// ONE BRAND // ONE SOURCE // ONE SYSTEM



REMA ID – the smart solution for tire identification

REMA ID is the new premium identification solution for your tire management process. Thanks to the innovative REMA ID SF and REMA ID CV RFID patches, REMA TIP TOP offers retreaders, fleet operators and tire service providers the possibility to identify tires without doubt therefore enable tracking and tracing tires for the complete product life cycle.



559 9010 REMA ID SF

The world's first solvent-free tire identification solution **REMA ID SF** is applied into the unmounted tire. Thanks to its robust design, the transponder can easily withstand high temperatures as well as compression, stretching and friction forces. This means that the premium product remains in service from the first to the last day of the tire's use.

- Ideal for retreading, fleet management and inventory management.
- REMA ID enables efficient identification and cataloging of tires.

- Retreading processes can be made transparent and traceable.
- **REMA ID** is insensitive to dirt compared to barcode labels.

559 9010 REMA ID SF

| | |
|-------------------------------|--------------------------------------------------------------------------------------------------------------------------------------------------------------------|
| Description: | RFID patch with REMA TIP TOP solvent-free bonding layer; installation without cement. |
| Main application Area: | Inside the tire; industrial processes e.g. retreading |
| Application Method: | The connection with the tire is made during a vulcanization process. To attach the patch to the tire, a heating function is required (e.g.: heating box, infrared) |
| VPE/Packing Unit: | Packed by 500 units per box |

Technical Specifications

| | |
|-------------------|------------------------------------------------------------------------------------------------------------------------------------------------------------------------------------------------------------------------------------------------------------------------------------------------------------------------------------------------------------------------------------------------|
| Dimensions | 40 mm x 10 mm x 1.2 mm (1.58" x 0.39" x 0.05") Rectangular shape |
| Top Layer | Printed with REMA TIP TOP logo, RFID logo, "REMA ID SF", 2D Barcode containing identical ID to RFID |
| RFID | <p>Air Protocol: EPC Gen2, ISO18000-6C, Rain RFID</p> <p>Frequency: Global (865 – 928 MHz)</p> <p>EPC: Pre programmed with unique 96-bit ID, identical to 2D barcode</p> <p>Chip Memory: 128 bits of EPC memory; 64 bits of user memory; 96 bits TID inkl. 48-bit Serial</p> <p>Antenna: Special construction; adjusted to specific dampening of Rubber</p> |

532 0099 REMA ID-READER

The RFID reader gives you an easy approach to reading out the data from your RFID transponder. The touchscreen supports fast retrieval of the desired information. On top of this, you can transfer the read-out data to a PC, if needed.

532 0099 REMA ID READER

| | |
|----------------------------|-------------------------------------------------------------------------------------------------------------|
| Description: | Hand held RFID Reader with Android OS incl. 1D & 2D barcode reader; connectivity: USB, WiFi, Bluetooth, GSM |
| Read data: | EPC, TID, Count; RSSI |
| Application Method: | Manual and automatic reading; single or bulk reading; captured data can be downloaded to PC |





559 9020 REMA ID CV
REMA ID CV (Cold Vulc) offers fleet managers, leasing providers and tire inspectors an innovative solution that can be retrofitted to fitted and inflated tires. In this process, the RFID transponder, which is incorporated into a patch, self-vulcanizes onto the tire. The solution can be used right up to the end of the tire's service life. This makes REMA ID CV a practical approach to optimizing tracking of existing tires.

- A large number of tires can be detected in a single scan.
- The range for reading the transponder chip can be up to several meters.

- The ID stored on the transponder is worldwide unique.
- REMA ID is a passive component without a battery.

| 559 9020 REMA ID CV | |
|------------------------|-------------------------------------------------------------------------------------|
| Description: | RFID patch with embedded RFID transponder; installation with cement (FD-BL) |
| Main application Area: | Outside & inside the tire |
| Application Method: | Applied with REMA TIP TOP cement FD-BL; self vulcanization within 24h@≥18°C (≥65°F) |
| VPE/Packing Unit: | Packed by 50 units per box |

| Technical Specifications | |
|--------------------------|-----------------------------------------------------------------------------------------------------|
| Dimensions | 73 mm x 34 mm x 3 mm (2.87" x 1.34" x 0.12") Oval shape |
| Top Layer | Black rubber, Ozone & UV resistant compound |
| RFID | Air Protocol: EPC Gen2, ISO18000-6C, Rain RFID |
| | Frequency: Global (865 – 928 MHz) |
| | EPC: Pre programmed with unique 96-bit ID |
| | Chip Memory: 128 bits of EPC memory; 64 bits of user memory; 96 bits TID inkl. 48-bit Serial |
| | Antenna: Special construction; adjusted to specific dampening of Rubber |

550 0050 REMA ID CV-Starter kit
The REMA ID CV starter kit contains all the components you need for the application of REMA ID CV. It includes REMA ID CV patches, fast dry cement and the necessary tools. With our complete package for new customers, you can install REMA ID immediately and future-proof your tire management today.

| 550 0050 REMA ID CV Starter kit | |
|---------------------------------|----------------------------------------------------------------------------------------------------------------------------------------------------------|
| Description: | Complete kit to start working with REMA ID CV |
| Content: | REMA ID CV (50 pcs) CEMENT FD-BL (175g) LIQUID BUFFER (500ml spray) Hand Buffing Tool Innerliner Scraper Stitcher Brass-bristled brush |
| Info: | All components have been tested and are approved for working with REMA ID CV |





// ONE BRAND // ONE SOURCE // ONE SYSTEM

REMA TIP TOP - Tire Repair Materials

TUBE REPAIR MATERIALS

- Tube Repair Vulcanizing Patches
- Cold Vulcanizing Fluid
- Specialty Tube Repair Valves and Hardware
- Tube Repair Kits

TIRE REPAIR MATERIALS

- Radial Repair Units
- Bias Repair Units
- Plug Stem Repair
- UNIVERSAL Repair Units

OTR RETREAD PRODUCTS

- OTR Retread Radial Repair Units
- OTR Retread Bias Repair Units
- OTR Retread Cements
- Extruder Guns
- OTR Retread Cushion Gums & Repair Cords
- OTR Retread Rope Rubber
- OTR Retread Precure Cushion Gum

RETREAD & SPECIALTY RUBBER PRODUCTS

- Cushion Gum
- Rope Rubber
- Vulcanizing Compounds
- Retread Rubber Products - Specialty Chemicals

TEMPORARY REPAIR PRODUCTS

- Emergency Repairs
- Inserting Tools

CHEMICAL PRODUCTS

- Cements
- Pre-Buff Cleaners
- Bead Sealer/Innerliner Sealer
- Specialty Chemical Products

TIRE MOUNTING LUBRICANTS

- Universal Mounting Paste
- Liquid Mounting Lubricants
- Mounting Compounds
- Tire Mounting Lubricant Brackets, Brushes, Swabs

EQUIPMENT

- Tire Spreaders
- Extruders
- Regroover
- Thermopress II
- Thermopress EM
- Replacement Parts
- VULCSTAR Vulcanizing Machine and Accessories
- Bead Seaters
- EXPEL 30 Filter & Auto Drain Set

TIRE SERVICE CABINETS AND KITS

- Tire Service Cabinets and Kits

SHOP SUPPLIES

- Tire Repair Hand Tools
- Buffing Tools
- Cutting Tools
- Markers and Crayons
- Gloves
- Hand Cleaners
- Tire Talc
- Wheel Service Tools

AIR PRODUCTS

- Air Chucks
- Air Hoses
- Air Vacuum
- Air Compressor Accessories
- Gauges
- Couplers and Nipples

TIRE VALVES & HARDWARE

- Snap-In Valves
- Clamp-In Valves
- Specialty Valves
- Valve Accessories

TIRE BALANCING PRODUCTS

- PrecisionBalance Balancing Compound
- Wheel Weights Tools

TPMS

- TPMS Valve Rebuild Kits
- TPMS Tools & Kits
- TPMS Sensors and Replacement Valves
- TPMS Valve Caps