



// ONE BRAND // ONE SOURCE // ONE SYSTEM



INDUSTRIAL PRODUCTS

Pulley Lagging • Conveyor Products • Conveyor Belt Repair Material • Wear Protection Lining
Heavy Wear Protection • Corrosion Coatings & Linings • Rubber Linings • Anticaking • Material Handling Hose
Adhesives & Solutions • Splice Kits • Tools For Rubber and Conveyor Belt Work & Equipment

REMA TIP TOP has the most extensive line of cold bond pulley lagging available.

- REMA PERFORMANCEGrip 70 - Premium Pulley Lagging
- REMA PERFORMANCEGrip 70 SL - Premium Strip Lagging
- REMAGRIP - Diamond Lagging
- REMAGRIP CK-X - Ceramic Lagging for constant grip
- REMAGRIP CP-X - Smooth Ceramic Lagging for wear resistance
- T-REX - Pulley Lagging
- UNIGRIP SL 250 - Standard Strip Pulley Lagging Material
- UNIGRIP CR-L 215 - Standard Ceramic Pulley Lagging Material
- UNIGRIP CR-L 385 - Standard Ceramic Pulley Lagging Material

REMA TIP TOP Lagging comes standard with the C/N bonding layer to provide the ultimate adhesion to the pulley face when used with REMA TIP TOP adhesives.

Extended wear life and reduced slippage result in lower maintenance cost and less downtime. REMA TIP TOP can provide a recommendation of which lagging works best for your application.



PERFORMANCEgrip 70/CN



PERFORMANCEgrip 70/CN - SL Strip Lagging



REMA GRIP 50/CN



REMA GRIP 60/CN Available special rubber grades: V, OIL, S, HR



REMA LINE 65/CN



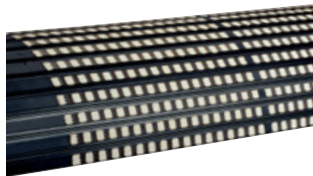
REMA GRIP 65/CN Available special rubber grades: V



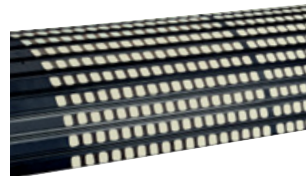
REMA GRIP 70/CN Available special rubber grades: V, S, HR



REMA GRIP 100/CN



REMA GRIP CK-X



REMA GRIP CP-X Smooth Ceramic



T-REX 60 1" Diamond Lagging



T-REX 70 2" Diamond Lagging



T-REX 70 SL 2" Diamond Lagging



UNIGRIP SL 250 Standard Strip Pulley Lagging Material



UNIGRIP CR-L 215 Standard Ceramic Pulley Lagging Material



UNIGRIP CR-L 385 Standard Ceramic Pulley Lagging Material

REMA TIP TOP manufactures a comprehensive range of conveyor accessories to optimize the performance of your conveyor system.

CONVEYOR BELTS

SKIRTING

- REMASKIRT
- UNISKIRT
- COMBI-SKIRT
- T-REX SKIRT



REMASKIRT 50



REMA COMBI-SKIRT



T-REX 40 Skirting



GRB REMACLEAN Motorized

BELT CLEANERS

- REMACLEAN - T-Bar Scrapers
- REMACLEAN - CAB Green
- REMACLEAN - CAB Grey
- REMACLEAN - Cleaning Brush



REMACLEAN KWA



REMACLEAN CAB GREEN



REMACLEAN CAB GREY

ROLLERS & PULLEYS

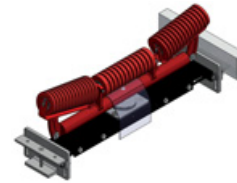
- REMASLEEVE
- REMAROLL
- REMATRACK



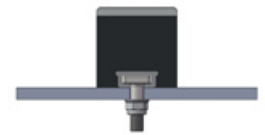
REMASLEEVE VSB-RE 40 ORANGE



REMASLEEVE VSB-E 40



REMATRACK type OT



REMASLIDE Low Friction KG-04 with TT-Fastening Unit type I

OTHER

- REMACLEAT
- Edge Wall Corrugated
- REMASLIDE Impact Slider Bed Bars

CONVEYOR BELT REPAIR MATERIAL

CONVEYING SOLUTIONS

REMA TIP TOP repair materials provide solutions for a wide variety of damage to conveyor belts from cover wear to perforations and ply damage.

- Round Repair Patches available with or without fabric reinforcement
- Diamond Repair Patches available with or without fabric reinforcement
- Repair Strips available with or without fabric reinforcement
- REMA GOO - Flexible Conveyor Belt Repair Material
- RG 7000 - For the Quick Cover Repair of Damage to Conveyor Belting
- T2 Repair System



RG 7000 750g kit



REMA GOO Kit



T2 System



Belt Repair Kit CR-1

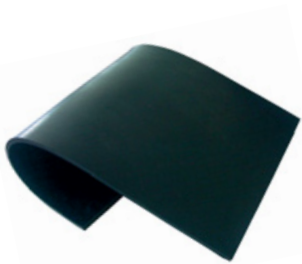


Belt Repair Kit DC-1

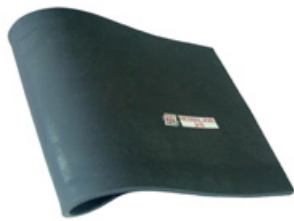
REMA TIP TOP manufactures a wide range of wear protection lining products to provide optimum protection for your machinery and equipment, which minimizes production downtime, reduces maintenance costs and increases productivity.

REMA TIP TOP's innovative products such as PerformanceLine 70, REMALINE, REMALINE MAINTENANCE PRO, REMATHAN, REMASTAR, and T-REX 40 Rubber Lining are proven performers in all types of tough applications. Our sales and service teams will work out the best solutions for your company's specific application.

- REMA Performance Line - Premium Rubber Lining Material
- REMALINE Rubber Linings - available with a wide variety of hardnesses
- REMATHAN - Polyurethane wear lining for high wear and oil resistance
- REMASTAR - Polyurethane and rubber wear lining for cut and gouge resistance
- T-REX Rubber Lining



PerformanceLine 70



REMALINE 25



REMALINE 35



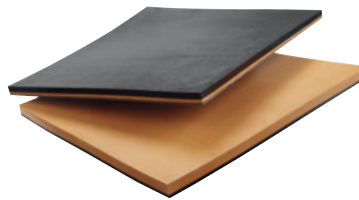
REMALINE 35 Maintenance Pro



REMALINE 40



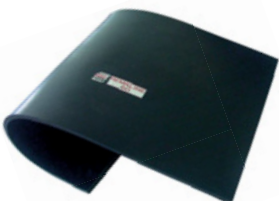
REMALINE 40 ORANGE



REMALINE 40 Maintenance Pro



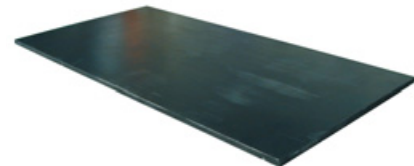
REMALINE 50



REMALINE 60



REMALINE 70



REMALINE 90



REMATHAN



REMASTAR



T-REX 40 Rubber Lining

HEAVY WEAR PROTECTION

REMA TIP TOP heavy duty wear linings provide a longer wear life in applications with extreme abrasion. REMALOX HD with ceramic tiles provides extreme resistance to sliding abrasion. ZP Profile Bars, KG Profile Bars and Serrated Profile ZP Plates are molded from Isoprene and Butadiene (REMALINE 70) rubber compound that provides excellent abrasion and impact resistance. REMAMILL lining systems are custom engineered to provide the ultimate wear life for ball mills.

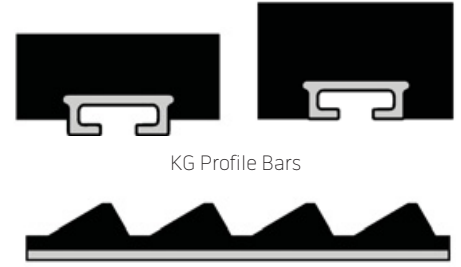
- REMALOX
- REMALOX HD
- KG Bars
- ZP Profile Bars
- REMAMILL
- RMS Modular Wear System
- REMA WEAR Repair



REMALOX HD 35



ZP Profile Bars

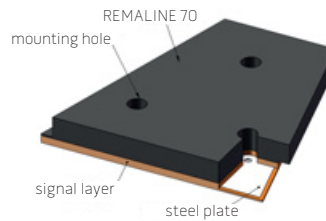


KG Profile Bars

Serrated Profile ZP Plates



REMAMILL Mill Lining



RMS-MP-70



REMA WEAR Repair

ANTICAKING

REMAFLON lining, REMALEN lining, and REMASLIDE plates ensure protection in most applications where dust or very fine and slightly moist, non-abrasive material prone to buildup has to be conveyed.

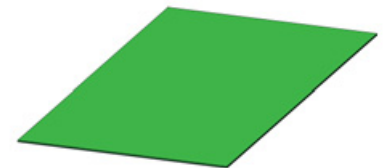
- REMAFLON
- REMALEN
- REMASLIDE plates



REMAFLON



REMALEN



REMASLIDE plates

MATERIAL HANDLING HOSE

REMA TIP TOP offers extremely wear resistant hoses ideally suited for lines that see highly abrasive slurries and experience premature fatigue at elbows and bends. Available as flanged or cut end hoses, in sizes from 2" to 36" ID and in lengths up to 50 feet. Both suction and discharge hose styles are available with working pressures up to 150 PSI and maximum temperatures of 180°F

- Fixed Flange
- Split or Swivel Flange
- Cut End Hose



RTT-MH Wear Resistant Mining Hose



RTT-CEH Wear Resistant Cut End Hose

WEAR & CORROSION PROTECTION

WEAR & CORROSION PROTECTION

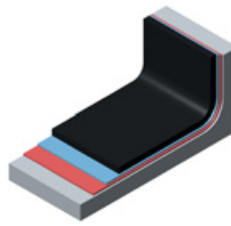
REMA TIP TOP CHEMOLINE and CHEMONIT corrosion protection systems have been used successfully around the world for many years. These systems cover a wide range of different applications and can be applied on-site or in the workshop to ensure heavy-duty corrosion protection. The CHEMOLINE rubber line includes over 30 different compounds to meet various chemical and corrosion applications.

ON-SITE RUBBER LININGS

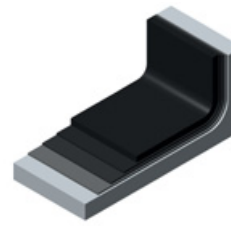
- CHEMOLINE—Pre-Vulcanized Soft Rubber Lining
- CHEMOLINE—Self-Vulcanizing Soft Rubber Lining

WORKSHOP RUBBER LININGS

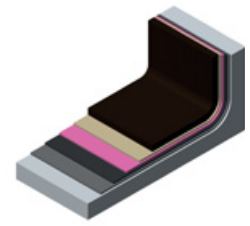
- CHEMOLINE— Non-Vulcanized Soft Rubber Lining
- CHEMONIT— Non-Vulcanized Hard Rubber Lining



Typical build-up, using CHEMOLINE 4 CN as example



Typical build-up, using CHEMOLINE 4 B as example



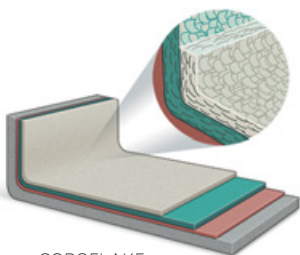
Typical build-up, using CHEMONIT 33 as example

CORROSION COATINGS & LININGS

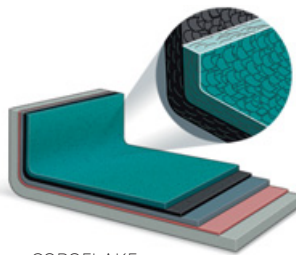
WEAR & CORROSION PROTECTION

REMA TIP TOP is a global market leader in the corrosion industry, specializing in high performance polymer resin based Coating, Lining and Flooring systems to solve corrosion problems in a wide range of industrial market applications. These systems are designed to provide optimum corrosion protection, ease of application, reduced downtime, and cost effective solutions for long term service. Our polymer resin products are manufactured in Madison GA and marketed in North America by RCC Corrosion Control. www.rcc-corrosion.com.

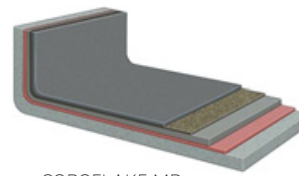
- COROFLAKE - Trowel applied glass flake reinforced linings
- COROFLAKE - Spray and roller applied flake filled coatings/linings
- COROFLAKE MR - Mat reinforced flake filled linings
- COROGARD - Protective coatings/linings
- COROFLOOR - Polymer flooring systems
- TOPLINE - Trowel applied reinforced linings
- RCC LININGS - Mat and resin reinforced laminate linings
- COROFLEX LININGS - High performance crack-bridging systems



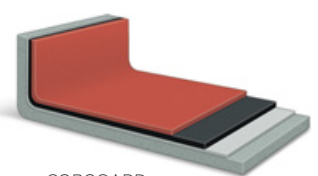
COROFLAKE (Trowel)



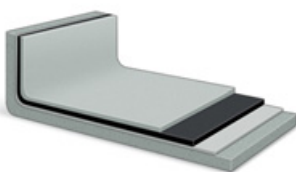
COROFLAKE (Spray)



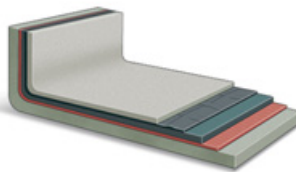
COROFLAKE MR



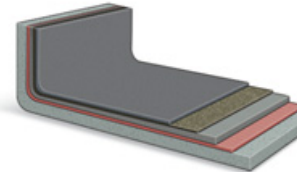
COROGARD



COROFLOOR



TOPLINE



RCC LININGS

ADHESIVES AND RUBBER SOLUTIONS

REMA TIP TOP is the recognized leader in cold vulcanizing cements, cleaning fluids, and repair materials for bonding rubber-to-rubber, rubber-to-fabric, and rubber-to-steel, always guaranteeing the highest adhesive strength. REMA TIP TOP SC2000 and SC4000 cements are renowned in the industry as "best-in-class" from the only manufacturer offering an entire range of cold vulcanized repair options. Convenient repair kits are available and designed specifically for a complete do-it-yourself repair system.

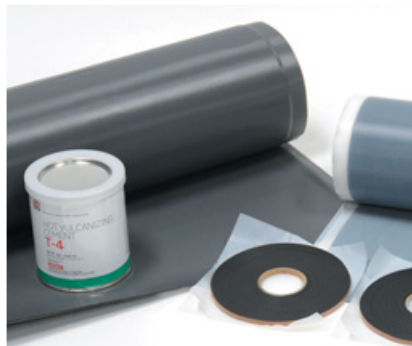


REMA TIP TOP Cements and Adhesives

- SC 2000 Black / White
- SC 4000 Black / White
- BC 3004 Blue Cement
- PC-4 Plastic Cement
- Solvents & Primers

SPLICE KITS

REMA TIP TOP Hot and Cold conveyor belt splicing materials have proven their quality all over the world. REMA TIP TOP Cold materials are designed for splicing fabric belts and repairing conveyor belt damage. REMA TIP TOP Hot materials are used successfully on fabric and steel-cable reinforced belting, providing high initial bond strength and proven performance every time.



REMA TIP TOP Hot Splicing materials



FS-1 Fabric Belt Splicing Tool Kit

- Hot Splice Kits
- WK Press and Splice Material
- Filler Rubber
- CN Bonding Rubber

TOOLS FOR RUBBER AND CONVEYOR BELT WORK & EQUIPMENT

REMA TIP TOP offers a wide variety of rubber working hand tools for belt splicing and rubber lining shops together with pneumatic rubber cutting saws, rubber extrusion guns, steel cable belt stripping units and hand-held electric rubber stripping units.

- FS-1 Fabric Splicing Tool Kits
- CR-1, DC-1 and RG-1 Cold Repair Kits
- Rubber Knives
- Buffing Tools
- Rollers & Stickers
- Combi Strippers
- Steel Cable Strippers
- Hot Vulcanizing Presses
- Rubber Cut Saw
- Extruder Gun
- Re-grooving Tool



REMA TIP TOP Rubber Working Tools

REMA TIP TOP Product & Solutions

CONVEYING SOLUTIONS

Pulley Lagging

- PERFORMANCEGrip 70
- REMAGRIP Diamond Lagging
- REMAGRIP CK-X Ceramic Lagging
- REMAGRIP CP-X Smooth Ceramic Lagging
- T-REX
- UNIGRIP

Rollers & Pulleys

- REMASLEEVE
- REMAROLL
- REMATRACK

Skirting

- REMASKIRT
- UNISKIRT
- COMBI-Skirt
- T-REX Skirt

Repair Products

- Repair Patches
- Repair Strips
- REMA GOO
- RG 7000
- T-2 Repair System

Belt Cleaners

- REMACLEAN - T-Bar Scrapers
- REMACLEAN - CAB Green
- REMACLEAN - CAB Grey
- REMACLEAN - Cleaning Brush

Other

- Conveyor Belting
- REMACLEAT
- Edge Wall Corrugated
- REMASLIDE Impact Slider Bed Bars

WEAR & CORROSION PROTECTION

Wear Protection Lining

- REMA Performance Line
- REMALINE
- REMATHAN
- REMASTAR
- T-REX

Heavy Wear Protection

- REMALOX
- REMALOX HD
- KG Bars
- ZP Profile Bars
- REMAMILL
- RMS Modular Wear System
- REMA WEAR Repair

Corrosion Coatings & Linings

- COROFLAKE
- COROGARD
- COROFLOOR
- TOPLINE
- RCC LININGS
- COROFLEX

Rubber Linings

- CHEMOLINE
- CHEMONIT

Anticaking

- REMAFLOX
- REMALEN
- REMASLIDE

Material Handling Hose

- Fixed Flange
- Split or Swivel Flange
- Cut End Hose

ADHESIVES & SOLUTIONS

Cements & Adhesives

- SC 2000 Black / White
- SC 4000 Black / White
- BC 3004 Blue Cement
- PC-4 Plastic Cement

Solutions

- PR 200 Metal Primer
- #13 Cleaning Solvent
- R50 Cleaning Solvent
- TIP TOP Hand Cleaner
- A&B Vulc Compound

Splice Kits

- Hot Splice Kits
- WK Press and Splice Material
- Filler Rubber
- CN Bonding Rubber

TOOLS & REPAIR

Tools

- Fabric Splicing Tool Kits
- Cold Repair Kits
- Rubber Knives
- Buffing Tools
- Rollers & Stitchers
- Combi Strippers
- Steel Cable Strippers
- Hot Vulcanizing Presses
- Rubber Cut Saw
- Extruder Gun
- Re-Grooving Tool

Other

- REMAWRAP Pipe Repair
- OTR Tire Patches



// ONE BRAND // ONE SOURCE // ONE SYSTEM

REMA TIP TOP/North America, Inc.
1500 Industrial Blvd.
Madison, GA 30650
Phone: 800.334.REMA (7362)
706.752.4000
Fax: 706.752.4015
www.rematiptop.com