



// ONE BRAND // ONE SOURCE // ONE SYSTEM

REMALINE 35 - Premium quality for wet wear and build-up

REMA TIP TOP's high-quality **REMALINE** lining offers optimum surface protection for your machinery and equipment while minimizing production downtime, reducing maintenance costs, and increasing productivity.

APPLICATION AREAS

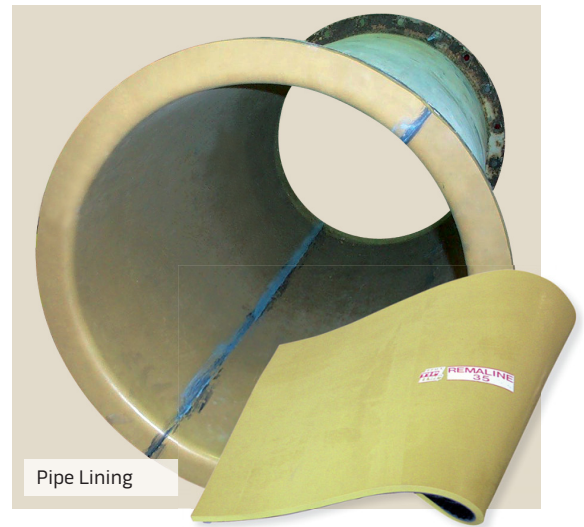
REMALINE 35 is an highly elastic natural rubber compound with excellent resistance to wet abrasion and sharp particles. The properties of **REMALINE 35** make it the optimum rubber lining for sand and gravel industry equipment as well as in the glass industry. **REMALINE 35** has also proven valuable with sticky material such as loam and clay.

TYPICAL FIELDS OF USE

- Pipe linings, pumps, cyclones, discharge boots for ready-mix concrete plants
- Tank and chute linings for sticky materials such as mud and clay
- Slides, gutters and aprons
- Loader bucket lining to prevent build-up

ADVANTAGES

- Build-up elimination
- Noise reduction
- Easy and fast installation
- Increases the efficiency of your equipment
- Technical consultation and data available anytime



TECHNICAL PROPERTIES

Product characteristics	REMALINE 35, consisting of 95% natural rubber, is a material with extraordinarily high elasticity and stretching properties.	
	CN bonding layer: REMALINE 35 comes equipped with a CN bonding layer, which affords the product an extremely good adhesive quality in combination with the REMA TIP TOP adhesive systems.	
Storage stability	Max. 24 months At 77°F ± 3.6°F with no loss in quality Subject to DIN regulation 7716	
Color		Yellow
Polymer	DIN ISO 1629	NR
Hardness	DIN ISO 7619-1	33 Shore A
Abrasion	DIN ISO 4649	150(5N) mm ³
Specific Weight	DIN EN ISO 1183-1	0.96 g/cm ³ (59.93 lb/ft ³)
Tensile Strength	DIN 53 504	16 N/mm ²
Elongation at break	DIN 53 504	790%
Resilience Elasticity	DIN 53 512	78%
Tear Growth Resistance	ISO 34-1 Method A	8 N/mm
Available sizes*	Standard thickness	1/8", 3/16", 1/4", 5/16", 3/8", 1/2", 5/8", 3/4", 1"
	Standard width	78" (1/8" only available in 60")

*Other sizes available on request. REMALINE 35 is also available with fabric reinforcement.

REMA TIP TOP/North America, Inc.

1500 Industrial Blvd. • Madison, GA 30650 • Phone 800.334.REMA (7362) • 706.752.4000 • Fax 706.752.4015 → www.rematiptop.com