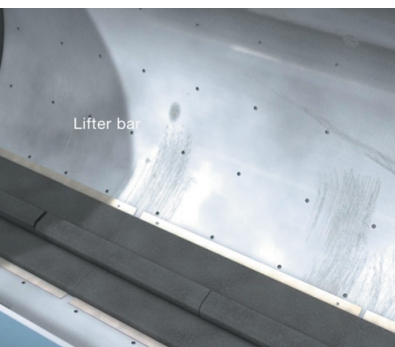
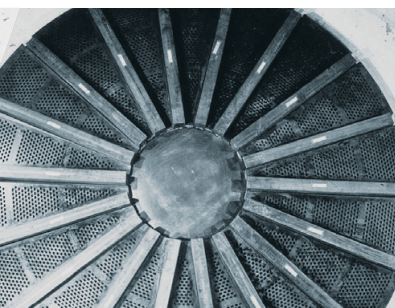
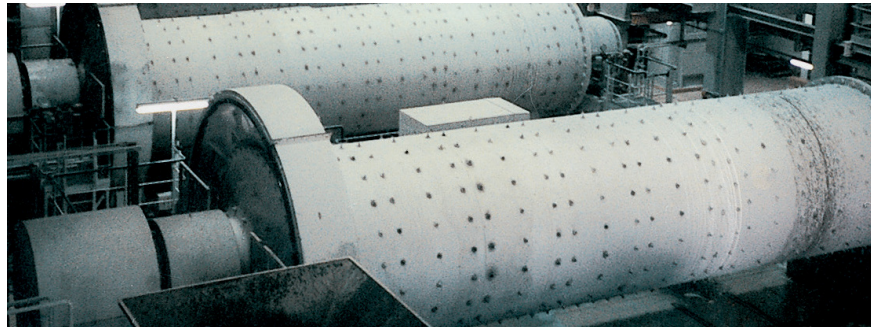
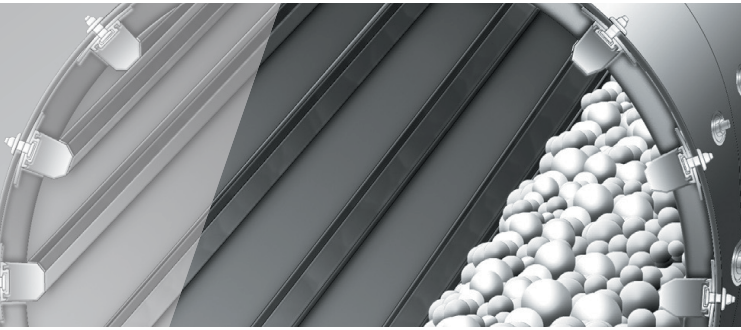




// ONE BRAND // ONE SOURCE // ONE SYSTEM



REMA TIP TOP
Mill and washdrum linings

MILL AND WASHDRUM LININGS

Increased productivity

REMA MILL linings reduce operating costs and increases productivity. The individual design of the lining, adapted to each customer's needs, improves mill efficiency and output many times over and thereby significantly cuts energy costs. Highly wear-resistant elastomer materials prolong service-life and reduce noise considerably.

Properties

- Highly abrasion-resistant **REMAMILL 70** rubber (up to 70C) 158 F
- Heat resistant **REMAMILL 70 HR** rubber (up to 90C)

Area of application

- Autogenous (AG) mills
- Semi-autogenous (SAG) mills
- Ball mills
- Pebble mills
- Rod tube mills
- Ceramic mills (salt mills, continuous mills)
- Washing and slurry drums
- Bark peeling drums

Shell plates

- Wear protection for the mill shell
- Fastening lips made of steel or rubber
- Fixed by lifters

Lifter bars

- Transport of grinding media and the material to be milled
- Beveled for optimal cataract effect
- Fastening of shell plates
- Fastening profile made for the specific purpose of aluminum or steel

End profiles and filling segments

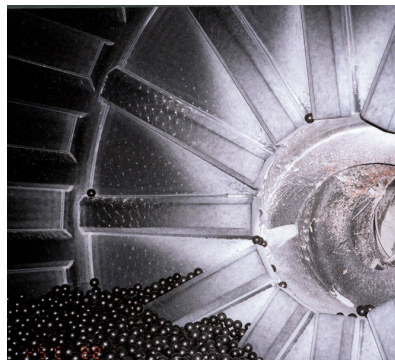
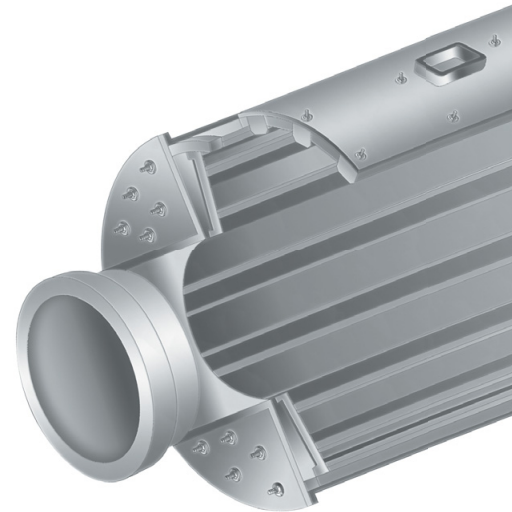
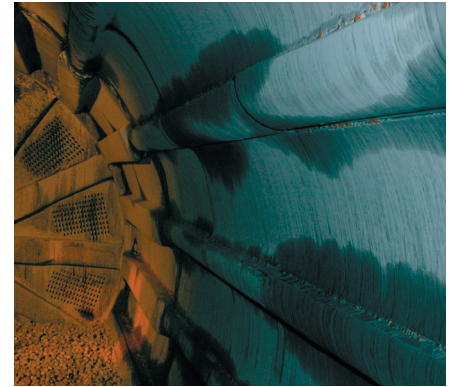
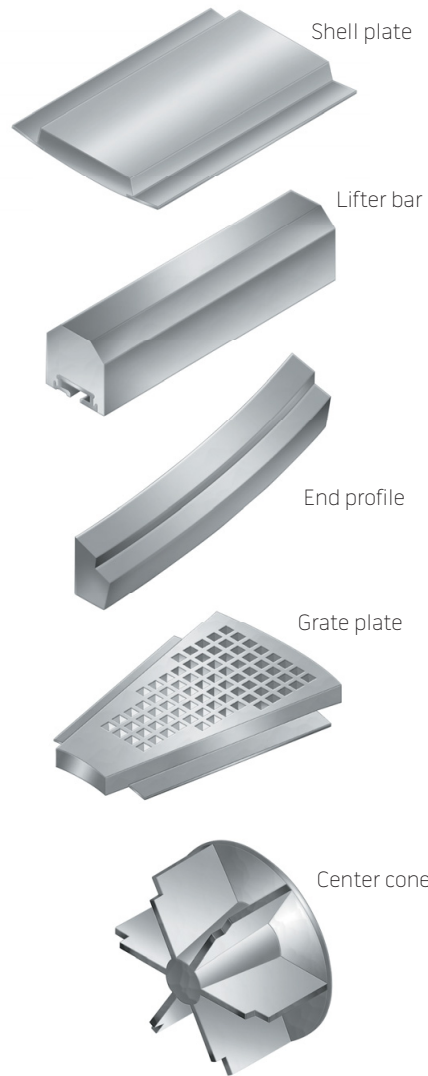
- Transition between the shell and head lining
- Multiple parts for easier installation

Grate plate

- Sifting of crushed material
- Fastening lips made of steel or rubber
- Fixed by lifters, self-centering chuck, pulp lifters and connecting profile

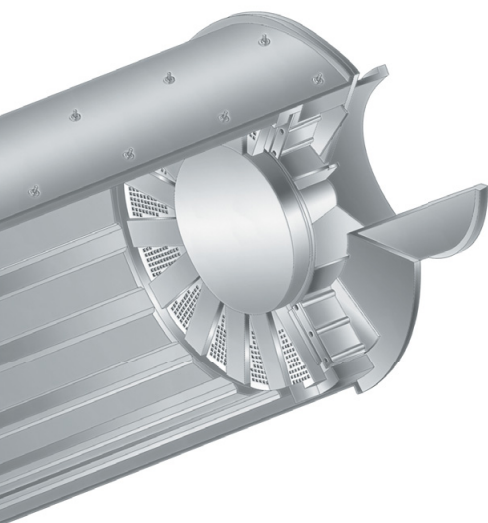
Center cone

- Central material discharge element
- Steel construction with high-quality vulcanized rubber wear protection



MILL AND WASHDRUM LININGS

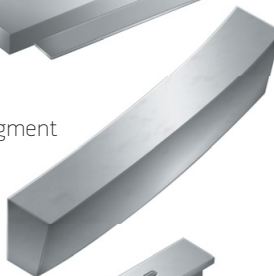
Service



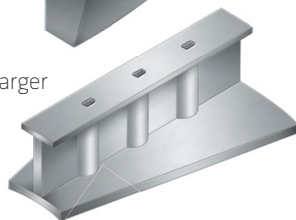
Head plate



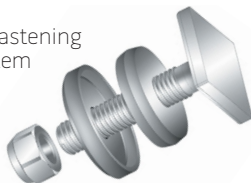
Filling segment



Discharger



TT fastening system



Manhole cover



Head plates

- Lining of the head or shell
- Fastening lips made of steel or rubber
- Fixed by lifters

Discharger

- Transport of milled material
- Steel construction with high-quality vulcanized rubber for wear protection

TT-Fastening System

- TT-Fastening System: Consists of forged TT bolts with washer, elastomer seal and self-locking nut
- Clamp Block Fastening System: Consists of clamp block with washer, elastomer seal and self-locking nut.

Manhole cover

- Manhole cover with adapted lifter and shell plates
- Form made of steel with high quality vulcanized rubber for wear protection
- Adjusted lifters and shell plates screwed on manhole lid

REMA TIP TOP SERVICE

If you choose a lining from **REMA TIP TOP** you will have:

- Access to our world-wide service system
- Reliable, customer orientated and run by experienced engineers
- Products evolved as a result of close co-operation with the end users
- Products designed for maximum lifetime, ease of installation and cost-effectiveness
- Access to our experienced installation team and inspection personnel.



REMA TIP TOP Product & Solutions

CONVEYING SOLUTIONS

Pulley Lagging

- PERFORMANCE GRIP 70
- REMAGRIP
- REMAGRIP Ceramic Lagging
- UNIGRIP
- UNILAG
- T-REX

Belt Cleaners

- REMACLEAN - T-Bar Scrapers
- REMACLEAN - Green Combi
- REMACLEAN - Grey Combi
- REMACLEAN - Cleaning Brush

Skirting

- REMASKIRT
- Combi-Skirt
- T-REX
- UNISKIRT

Repair Products

- Repair Patches
- Repair Strips
- REMA GOO
- RG 7000
- T2 Repair System

Other

- Conveyor Belting
- REMACLEAT
- Edge Wall
- Impact Slider Bed Bars
- REMAMILL
- REMASCREEN

Rollers & Pulleys

- REMASLEEVE
- REMAROLL
- REMATRACK

WEAR & CORROSION PROTECTION

Wear Protection Lining

- REMA Performance Line
- REMALINE
- REMASTAR
- UNILINE
- REMATHAN
- T-REX

Rubber Linings

- CHEMOLINE
- CHEMONIT

Heavy Wear Protection

- REMALOX
- REMALOX HD
- KG Bars
- ZP Profile Bars
- REMA WEAR Repair

Anticaking

- REMAFLOX
- REMALEN
- REMASLIDE

Corrosion Coatings & Linings

- COROFLAKE
- COROGARD
- COROFLOOR
- TOPLINE
- RCC LININGS
- COROFLEX

Material Handling Hose

- Fixed Flange
- Split or Swivel Flange
- Cut End Hose

ADHESIVES & SOLUTIONS

Cements & Adhesives

- SC 2000 Black / White
- SC 4000 Black / White
- BC 3004 Blue Cement
- PC-4 Plastic Cement

Solutions

- PR 200 Metal Primer
- #13 Cleaning Solvent
- R50 Cleaning Solvent
- TIP TOP Hand Cleaner
- A&B Vulc Compound

Splice Kits

- Hot Splice Kits
- MSHA Splice Kits
- WK Press and Splice Material
- Filler Rubber
- CN Bonding Rubber

TOOLS & REPAIR

Tools

- Rubber Cut Saw
- Extruder Gun
- Vulcanizing Presses
- Combi Stripper
- Grooving Tool

Other

- REMAWRAP Pipe Repair
- OTR Tire Patches



// ONE BRAND // ONE SOURCE // ONE SYSTEM

REMA TIP TOP/North America, Inc.
1500 Industrial Blvd.
Madison, GA 30650
Phone: 800.334.REMA (7362)
706.752.4000
Fax: 706.752.4015
www.rematiptop.com