



// ONE BRAND // ONE SOURCE // ONE SYSTEM

REMA GOO - Application Instructions



1. Clean and remove all dirt and debris from conveyor belt surface with an approved solvent and clean rag using the solvent sparingly. Do not saturate the rag or area to be cleaned.



2. Grind a bevel around the gouge, hole or damaged area on the covers of the belting using a coarse grinding disc to grind 2" to 3" beyond edges of damaged area.



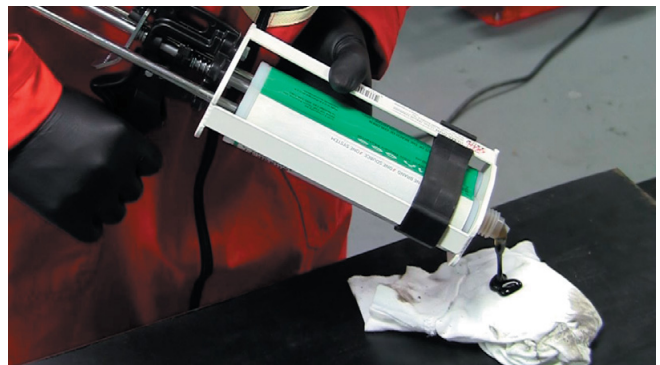
3. Use oil-free compressed air to blow off all debris or use Foxtail Dust Brush to remove debris generated during grinding. Again thoroughly clean the repair areas lightly with solvent and let the area dry completely.



4. When REMA GOO is to be used on a hole through the conveyor belt, bevel both top and bottom covers around the hole and clean thoroughly as indicated above. Then use a polypropylene sheet or duct tape to seal bottom of hole before applying REMA GOO. You may also use Round or Diamond Shaped Repair Patches (preferred).



5. Put cartridge into the REMA Gun.

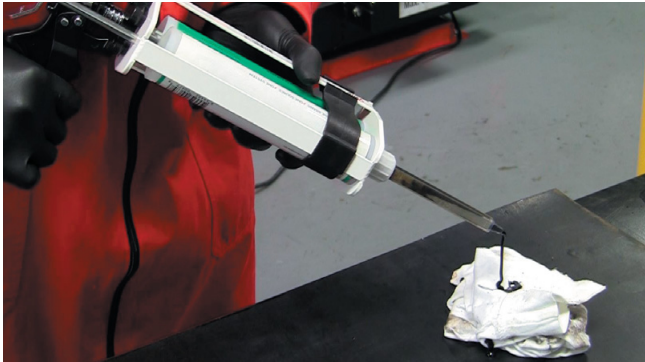


6. Dispense just enough material so that both components dispense equally.

REMA TIP TOP/North America, Inc.

1500 Industrial Blvd. • Madison, GA 30650 • Phone 800.334.REMA (7362) • 706.752.4000 • Fax 706.752.4015 → www.rematiptop.com

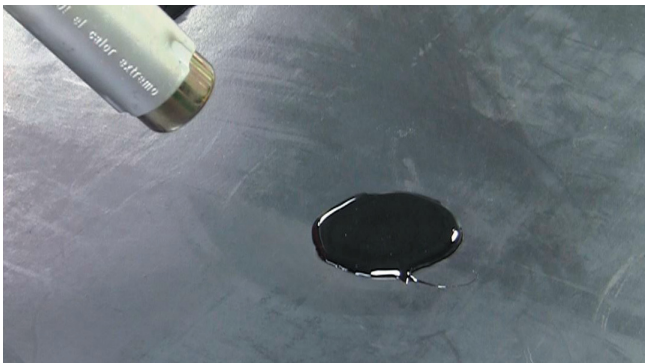
REMA GOO - Application Instructions



7. Assemble the mix tip onto the cartridge, depress trigger of gun to dispense a small amount of REMA GOO and then discard before using REMA GOO on belt for repairs.



8. Dispense enough REMA GOO into the area to completely fill damaged area. Use a spreader or putty knife to smooth out material around repaired area.



9. Allow REMA GOO to cure at (ambient) + 75° F. for at least 2 hours before system is put back into very limited service or apply heat to the area of the belt that was repaired. If a heat gun is used to apply heat, heat on high for 15 to 30 minutes. Hold gun 6 to 8 inches above the belt and use a constant back and forth motion to distribute heat evenly. This will help to set the surface of the REMA GOO so the system can be put back into limited service. REMA GOO's final cure will still take approximately 16 hours at 75° F. to achieve its final physical properties.



10. Let the repaired area cool to ambient temperature, if heat was used, and remove all duct tape or damming material and grind repair area smooth if needed or use a razor knife to cut the REMA GOO flush with the belting covers.