



// ONE BRAND // ONE SOURCE // ONE SYSTEM

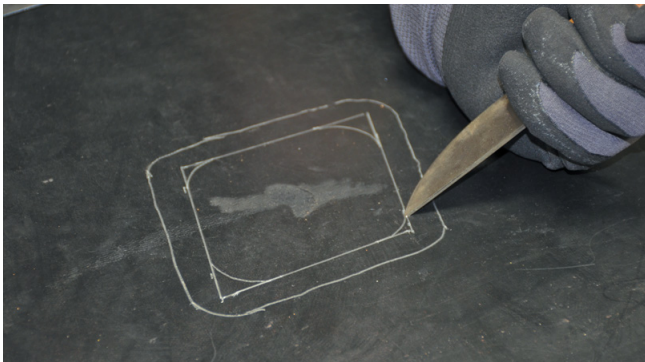
Cold Repair of Conveyor Belt - Diamond Patch



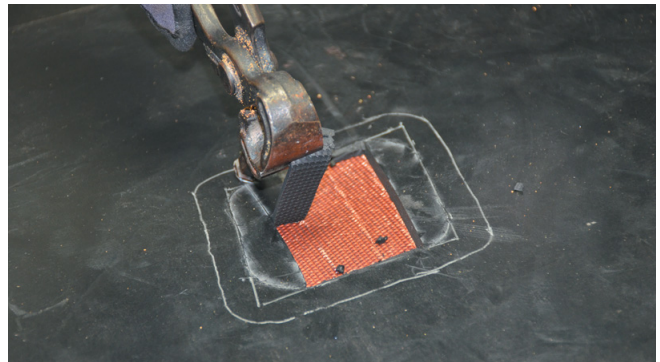
1. Place diamond patch over damaged area leaving at least $\frac{1}{2}$ " on all sides and mark the outline.



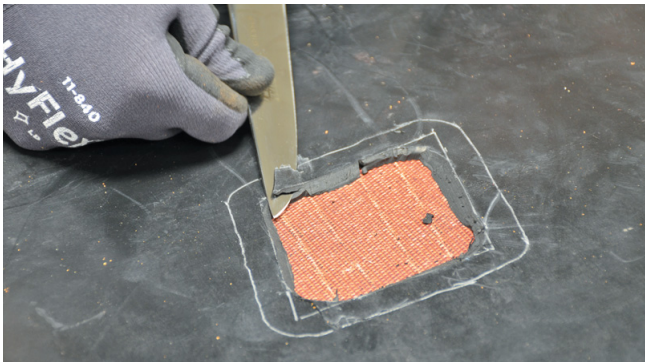
2. Trace a second marking line $\frac{1}{2}$ " inside the first outline, rounding off the corners.



3. Cut rubber cover along the inside marking line, holding the knife at least a 45° angle.



4. Cut rubber cover in narrow strips and pull them off using pincers, showing fabric.



5. Bevel $\frac{1}{2}$ " outer marking line down to the fabric on each side using a 6" knife.

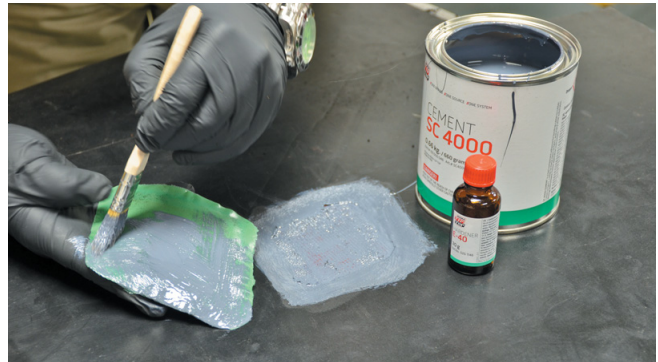


6. Using a rotating wire brush, buff the entire prepared area. Remove buffing dust with a dry brush.

Cold Repair of Conveyor Belt - Diamond Patch



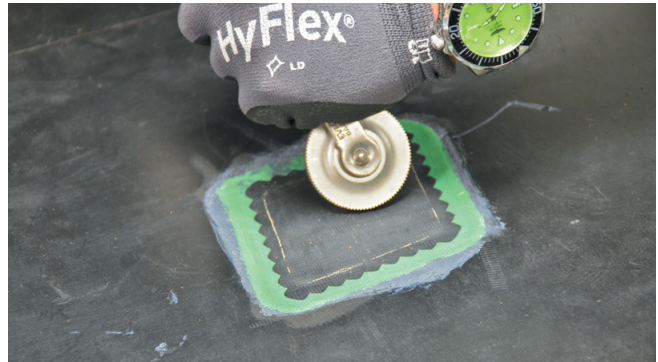
7. Apply mixture of SC 4000 Cement/ER-40 Hardener to the prepared area; rubbing it in vigorously. Let dry until the coating is slightly tacky. Test tackiness with the back of your finger (wearing gloves).



8. Apply a second coat to prepared area, as well as the back of the diamond repair patch after removal of the backing foil, with the same mixture. Allow to dry again until slightly tacky.



9. Apply diamond patch to prepared area; when applying the patch, both surfaces must still be slightly tacky when tested with the back of your finger (wearing gloves)



10. Stitch on patch; first with wide roller and then vigorously with small roller.