



// ONE BRAND // ONE SOURCE // ONE SYSTEM



## UNIGRIP CR-L 215

### Standard Ceramic Pulley Lagging Material

UNIGRIP CR-L 215 is the specially-designed pulley lagging material with ceramic inserts, especially suitable for wet and muddy conditions where belt slippage occurs.

# UNIGRIP CR-L 215

## Standard Ceramic Pulley Lagging Material

### UNIGRIP CR-L 215

UNIGRIP CR-L 215 is the specially-designed pulley lagging material with ceramic inserts. With good performance in wet, muddy, or dry conditions, UNIGRIP CR-L 215 provide a effective solution to solve your conveyor drive problems and enhance production efficiency of the whole system.

### Typical field of use

- Especially suitable for wet and muddy conditions where belt slippage occurs

### Properties

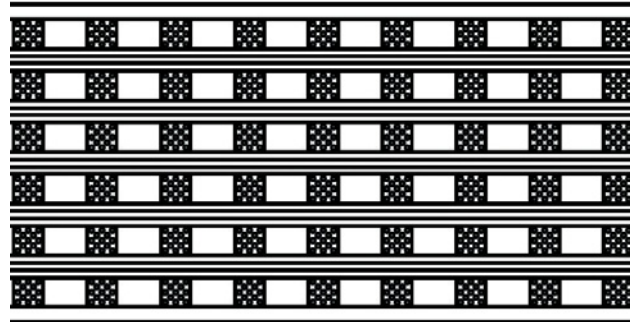
- Eliminates belt slippage
- 22% ceramic tiles coverage
- Unique design of ceramic tiles with the raised "knob" that increases friction between conveyor belts and pulleys
- Improve the system stability
- Increased belt and pulley service life
- Long-term system benefits
- Belt tension can be reduced, which means lower energy consumption, lower wear of whole system and lower cost per ton
- F.R.A.S (Fire Resistant Anti Static) products available on request

### Product Range

Thickness: 12mm

Width : 215mm

Length : 10,000mm



### Technical Properties

Color	Black
Hardness	62 shoreA
Abrasion	150 mm <sup>3</sup>
Ceramic	
Content of aluminium oxide:	92 %
Open porosity:	0 % acc. to DIN EN 60 672 0
E-Module:	300 GPa acc. to DIN EN 60 672 0
Density:	3.65 g/cm <sup>3</sup> acc. to DIN EN 60 672 0



// ONE BRAND // ONE SOURCE // ONE SYSTEM

**REMA TIP TOP/North America, Inc.**  
1500 Industrial Blvd.  
Madison, GA 30650  
Phone: 800.334.REMA (7362)  
706.752.4000  
Fax: 706.752.4015  
[www.rematiptop.com](http://www.rematiptop.com)